



**ELECTRONIC COPY**

LG790670701  
Report verification at igi.org



April 14, 2026

IGI Report Number **LG790670701**

Description **LABORATORY GROWN DIAMOND**

Shape and Cutting Style **CUT CORNERED  
RECTANGULAR MODIFIED  
BRILLIANT**

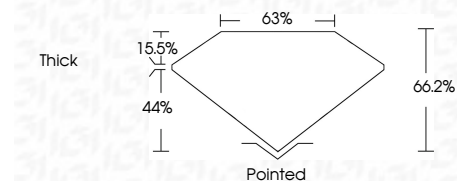
Measurements **8.01 X 5.57 X 3.69 MM**

**GRADING RESULTS**

Carat Weight **1.58 CARAT**

Color Grade **FANCY INTENSE YELLOW**

Clarity Grade **VVS 2**



**ADDITIONAL GRADING INFORMATION**

Polish **EXCELLENT**

Symmetry **VERY GOOD**

Fluorescence **NONE**

Inscription(s) **IGI LG790670701**

Comments: This Laboratory Grown Diamond was created by Chemical Vapor Deposition (CVD) growth process.



April 14, 2026  
IGI Report No LG790670701  
CUT CORNERED RECT. MODIFIED BRILLIANT  
8.01 X 5.57 X 3.69 MM  
1.58 CARAT  
FANCY INTENSE YELLOW  
VVS 2  
66.2%  
63%  
Thick  
Pointed  
EXCELLENT  
VERY GOOD  
NONE  
IGI LG790670701  
Comments: This Laboratory Grown Diamond was created by Chemical Vapor Deposition (CVD) growth process.

**LABORATORY GROWN DIAMOND REPORT**

April 14, 2026

IGI Report Number **LG790670701**

Description **LABORATORY GROWN DIAMOND**

Shape and Cutting Style **CUT CORNERED RECTANGULAR  
MODIFIED BRILLIANT**

Measurements **8.01 X 5.57 X 3.69 MM**

**GRADING RESULTS**

Carat Weight **1.58 CARAT**

Color Grade **FANCY INTENSE YELLOW**

Clarity Grade **VVS 2**

**ADDITIONAL GRADING INFORMATION**

Polish **EXCELLENT**

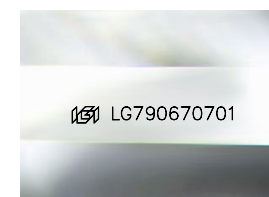
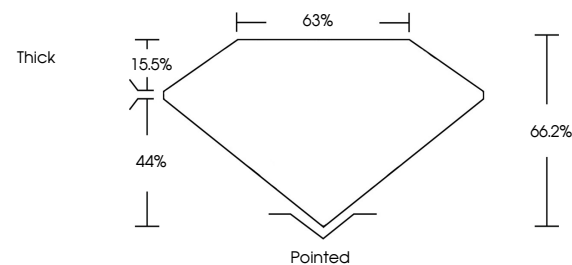
Symmetry **VERY GOOD**

Fluorescence **NONE**

Inscription(s) **IGI LG790670701**

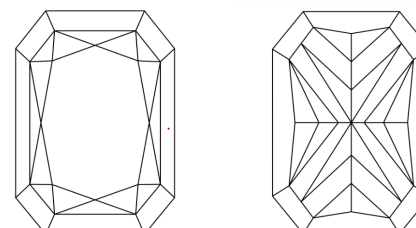
Comments: This Laboratory Grown Diamond was created by Chemical Vapor Deposition (CVD) growth process.

**PROPORTIONS**



Sample Image Used

**CLARITY CHARACTERISTICS**



**KEY TO SYMBOLS**

Red symbols indicate internal characteristics.  
Green symbols indicate external characteristics.

**COLOR**

D E F G H I J Faint Very Light Light

**CLARITY**

FL	IF	VVS <sup>1-2</sup>	VS <sup>1-2</sup>	SI <sup>1-2</sup>	I <sup>1-3</sup>
Flawless	Internally Flawless	Very Very Slightly Included	Very Slightly Included	Slightly Included	Included

