



ELECTRONIC COPY

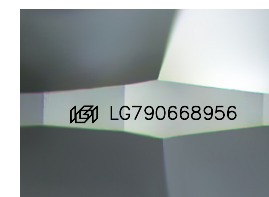
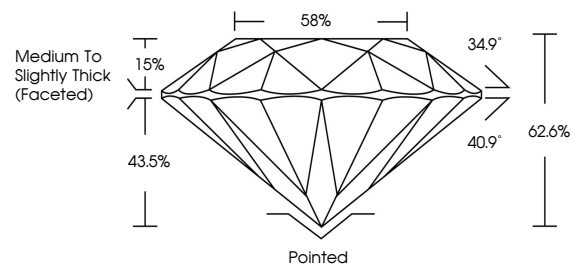
LG790668956
Report verification at igi.org



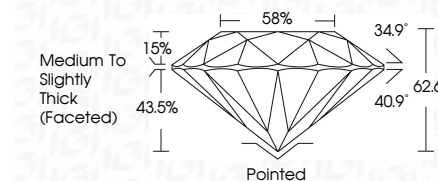
April 21, 2026
IGI Report Number LG790668956
Description LABORATORY GROWN DIAMOND
Shape and Cutting Style ROUND BRILLIANT
Measurements 6.89 - 6.91 X 4.32 MM
GRADING RESULTS
Carat Weight 1.28 CARAT
Color Grade FANCY VIVID BLUE
Clarity Grade VS 1
Cut Grade EXCELLENT

April 21, 2026
IGI Report Number LG790668956
Description LABORATORY GROWN DIAMOND
Shape and Cutting Style ROUND BRILLIANT
Measurements 6.89 - 6.91 X 4.32 MM
GRADING RESULTS
Carat Weight 1.28 CARAT
Color Grade FANCY VIVID BLUE
Clarity Grade VS 1
Cut Grade EXCELLENT

PROPORTIONS



Sample Image Used



ADDITIONAL GRADING INFORMATION

Polish EXCELLENT
Symmetry EXCELLENT
Fluorescence NONE
Inscription(s) IGI LG790668956

Comments: This Laboratory Grown Diamond was created by Chemical Vapor Deposition (CVD) growth process. Indications of post-growth treatment.

COLOR

D E F G H I J Faint Very Light Light

CLARITY

FL IF VS 1-2 VS 2-3 SI 1-2 I 1-3
Flawless Internally Flawless Very Very Slightly Included Very Slightly Included Slightly Included Included

ADDITIONAL GRADING INFORMATION

Polish EXCELLENT
Symmetry EXCELLENT
Fluorescence NONE
Inscription(s) IGI LG790668956
Comments: This Laboratory Grown Diamond was created by Chemical Vapor Deposition (CVD) growth process. Indications of post-growth treatment.



April 21, 2026
IGI Report No LG790668956
ROUND BRILLIANT
6.89 - 6.91 X 4.32 MM
1.28 CARAT
FANCY VIVID BLUE
VS 1
EXCELLENT
88%
Medium To Slightly Thick (Faceted)
Pointed
EXCELLENT
EXCELLENT
NONE
IGI LG790668956
Comments: This Laboratory Grown Diamond was created by Chemical Vapor Deposition (CVD) growth process. Indications of post-growth treatment.