



ELECTRONIC COPY

LG790668860
Report verification at igi.org



April 29, 2026

IGI Report Number **LG790668860**

Description **LABORATORY GROWN DIAMOND**

Shape and Cutting Style **ROUND BRILLIANT**

Measurements **6.67 - 6.71 X 4.03 MM**

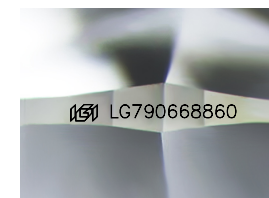
GRADING RESULTS

Carat Weight **1.10 CARAT**

Color Grade **LIGHT PINKISH BROWN**

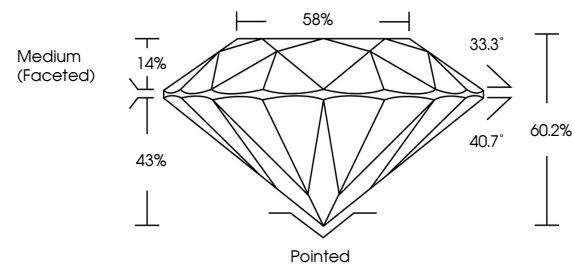
Clarity Grade **SI 1**

Cut Grade **IDEAL**

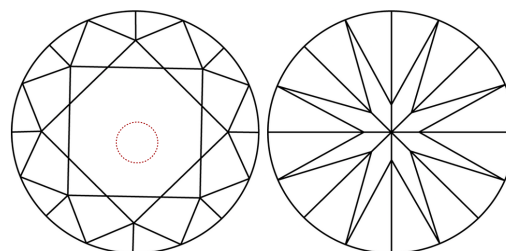


Sample Image Used

PROPORTIONS



CLARITY CHARACTERISTICS



KEY TO SYMBOLS

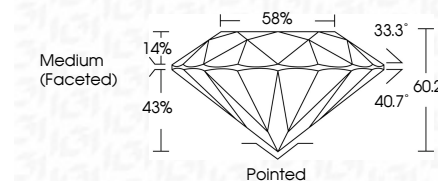
Red symbols indicate internal characteristics.
Green symbols indicate external characteristics.

COLOR

D E F G H I J Faint Very Light Light

CLARITY

FL	IF	VS ¹⁻²	VS ¹⁻²	SI ¹⁻²	I ¹⁻³
Flawless	Internally Flawless	Very Very Slightly Included	Very Slightly Included	Slightly Included	Included



ADDITIONAL GRADING INFORMATION

Polish **EXCELLENT**

Symmetry **VERY GOOD**

Fluorescence **VERY SLIGHT**

Inscription(s) **IGI LG790668860**

Comments: This Laboratory Grown Diamond was created by Chemical Vapor Deposition (CVD) growth process. Type IIa



IGI



April 29, 2026	IGI Report No LG790668860	1.10 CARAT	POINTED
ROUND BRILLIANT	6.67 - 6.71 X 4.03 MM	LIGHT PINKISH BROWN	EXCELLENT
Color Grade	SI 1	IDEAL	VERY GOOD
Clarity Grade	IDEAL	60.2%	VERY SLIGHT
Depth	58%	Medium (Faceted)	IGI LG790668860
Table			
Girdle			
Culet			
Polish			
Symmetry			
Fluorescence			
Inscription(s)			

Comments: This Laboratory Grown Diamond was created by Chemical Vapor Deposition (CVD) growth process. Type IIa