



ELECTRONIC COPY

LG790668855
Report verification at igi.org



April 29, 2026
IGI Report Number **LG790668855**
Description **LABORATORY GROWN DIAMOND**
Shape and Cutting Style **PRINCESS CUT**
Measurements **6.84 X 6.73 X 4.92 MM**
GRADING RESULTS
Carat Weight **2.06 CARATS**
Color Grade **LIGHT BROWN**
Clarity Grade **VVS 1**

LABORATORY GROWN DIAMOND REPORT

April 29, 2026
IGI Report Number **LG790668855**
Description **LABORATORY GROWN DIAMOND**
Shape and Cutting Style **PRINCESS CUT**
Measurements **6.84 X 6.73 X 4.92 MM**

GRADING RESULTS

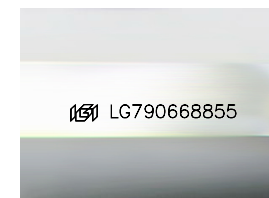
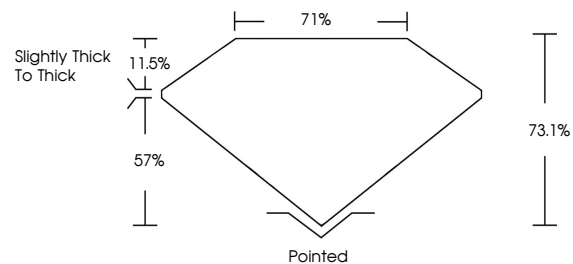
Carat Weight **2.06 CARATS**
Color Grade **LIGHT BROWN**
Clarity Grade **VVS 1**

ADDITIONAL GRADING INFORMATION

Polish **VERY GOOD**
Symmetry **VERY GOOD**
Fluorescence **VERY SLIGHT**
Inscription(s) **LG790668855**

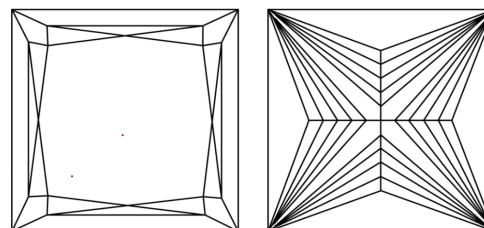
Comments: This Laboratory Grown Diamond was created by Chemical Vapor Deposition (CVD) growth process.
Type IIa

PROPORTIONS



Sample Image Used

CLARITY CHARACTERISTICS



KEY TO SYMBOLS

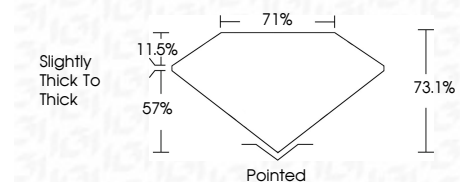
Red symbols indicate internal characteristics.
Green symbols indicate external characteristics.

COLOR

D E F G H I J Faint Very Light Light

CLARITY

| FL | IF | VS ¹⁻² | VS ¹⁻² | SI ¹⁻² | I ¹⁻³ |
|----------|---------------------|-----------------------------|------------------------|-------------------|------------------|
| Flawless | Internally Flawless | Very Very Slightly Included | Very Slightly Included | Slightly Included | Included |



ADDITIONAL GRADING INFORMATION

Polish **VERY GOOD**
Symmetry **VERY GOOD**
Fluorescence **VERY SLIGHT**
Inscription(s) **LG790668855**
Comments: This Laboratory Grown Diamond was created by Chemical Vapor Deposition (CVD) growth process.
Type IIa



IGI



April 29, 2026
IGI Report No **LG790668855**
PRINCESS CUT
2.06 CARATS
Carat Weight **2.06 CARATS**
Color Grade **LIGHT BROWN**
Clarity Grade **VVS 1**
Depth **73.1%**
Table **71%**
Girdle **Slightly thick to thick**
Culet **Pointed**
Polish **VERY GOOD**
Symmetry **VERY GOOD**
Fluorescence **VERY SLIGHT**
Inscription(s) **LG790668855**
Comments: This Laboratory Grown Diamond was created by Chemical Vapor Deposition (CVD) growth process.
Type IIa