



**ELECTRONIC COPY**

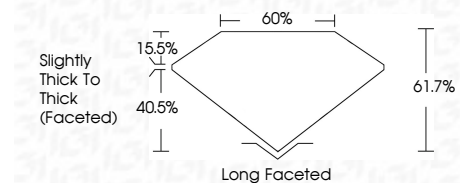
LG790668402  
Report verification at igi.org



April 29, 2026  
IGI Report Number **LG790668402**  
Description **LABORATORY GROWN DIAMOND**

Shape and Cutting Style **ANTIQUÉ CUSHION CUT**  
Measurements **11.94 X 8.86 X 5.47 MM**

**GRADING RESULTS**  
Carat Weight **5.03 CARATS**  
Color Grade **E**  
Clarity Grade **VVS 2**



**ADDITIONAL GRADING INFORMATION**  
Polish **EXCELLENT**  
Symmetry **EXCELLENT**  
Fluorescence **NONE**  
Inscription(s) **IGI LG790668402**  
Comments: This Laboratory Grown Diamond was created by Chemical Vapor Deposition (CVD) growth process. Type IIa



April 29, 2026  
IGI Report No LG790668402  
**ANTIQUÉ CUSHION CUT**  
11.94 X 8.86 X 5.47 MM  
5.03 CARATS  
E  
VVS 2  
61.7%  
40.5%  
Slightly Thick To Thick (Faceted)  
Long Faceted  
EXCELLENT  
EXCELLENT  
NONE  
IGI LG790668402  
Comments: This Laboratory Grown Diamond was created by Chemical Vapor Deposition (CVD) growth process. Type IIa

**LABORATORY GROWN DIAMOND REPORT**

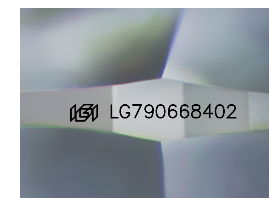
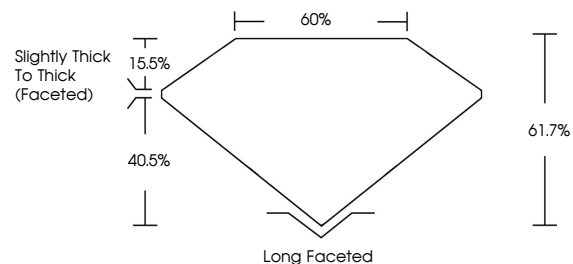
April 29, 2026  
IGI Report Number **LG790668402**  
Description **LABORATORY GROWN DIAMOND**  
Shape and Cutting Style **ANTIQUÉ CUSHION CUT**  
Measurements **11.94 X 8.86 X 5.47 MM**

**GRADING RESULTS**  
Carat Weight **5.03 CARATS**  
Color Grade **E**  
Clarity Grade **VVS 2**

**ADDITIONAL GRADING INFORMATION**  
Polish **EXCELLENT**  
Symmetry **EXCELLENT**  
Fluorescence **NONE**  
Inscription(s) **IGI LG790668402**

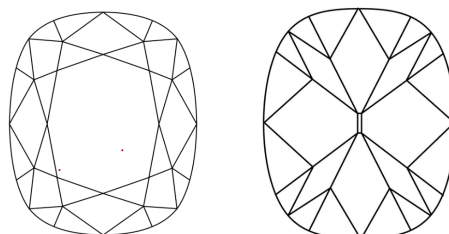
Comments: This Laboratory Grown Diamond was created by Chemical Vapor Deposition (CVD) growth process. Type IIa

**PROPORTIONS**



Sample Image Used

**CLARITY CHARACTERISTICS**



**KEY TO SYMBOLS**

Red symbols indicate internal characteristics.  
Green symbols indicate external characteristics.

**COLOR**

D E F G H I J Faint Very Light Light

**CLARITY**

FL	IF	VVS <sup>1-2</sup>	VS <sup>1-2</sup>	SI <sup>1-2</sup>	I <sup>1-3</sup>
Flawless	Internally Flawless	Very Very Slightly Included	Very Slightly Included	Slightly Included	Included

