



ELECTRONIC COPY

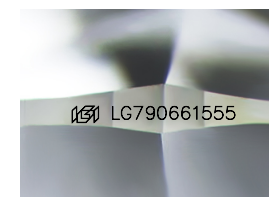
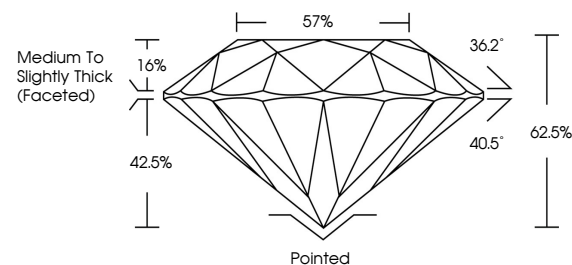
LG790661555
Report verification at igi.org



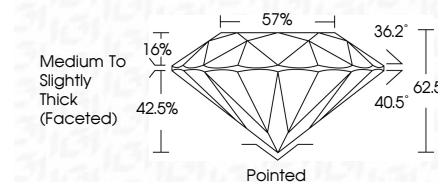
April 22, 2026
IGI Report Number **LG790661555**
Description **LABORATORY GROWN DIAMOND**
Shape and Cutting Style **ROUND BRILLIANT**
Measurements **7.27 - 7.31 X 4.55 MM**
GRADING RESULTS
Carat Weight **1.52 CARAT**
Color Grade **D**
Clarity Grade **VVS 1**
Cut Grade **EXCELLENT**

April 22, 2026
IGI Report Number **LG790661555**
Description **LABORATORY GROWN DIAMOND**
Shape and Cutting Style **ROUND BRILLIANT**
Measurements **7.27 - 7.31 X 4.55 MM**
GRADING RESULTS
Carat Weight **1.52 CARAT**
Color Grade **D**
Clarity Grade **VVS 1**
Cut Grade **EXCELLENT**

PROPORTIONS



Sample Image Used



ADDITIONAL GRADING INFORMATION

Polish **EXCELLENT**
Symmetry **EXCELLENT**
Fluorescence **NONE**
Inscription(s) **IGI LG790661555**

Comments: As Grown - No indication of post-growth treatment.
This Laboratory Grown Diamond was created by High Pressure High Temperature (HPHT) growth process.
Type II

COLOR

D E F G H I J Faint Very Light Light

CLARITY

FL	IF	VVS ¹⁻²	VS ¹⁻²	SI ¹⁻²	I ¹⁻³
Flawless	Internally Flawless	Very Very Slightly Included	Very Slightly Included	Slightly Included	Included

ADDITIONAL GRADING INFORMATION

Polish **EXCELLENT**
Symmetry **EXCELLENT**
Fluorescence **NONE**
Inscription(s) **IGI LG790661555**
Comments: As Grown - No indication of post-growth treatment.
This Laboratory Grown Diamond was created by High Pressure High Temperature (HPHT) growth process.
Type II



IGI



April 22, 2026
IGI Report No LG790661555
ROUND BRILLIANT
7.27 - 7.31 X 4.55 MM
1.52 CARAT
Color Grade **D**
Clarity Grade **VVS 1**
Depth **62.5%**
Table **16%**
Girdle **57%**
Medium To Slightly Thick (Faceted)
Culet **Pointed**
Polish **EXCELLENT**
Symmetry **EXCELLENT**
Fluorescence **NONE**
Inscriptions(s) **IGI LG790661555**
Comments: As Grown - No indication of post-growth treatment.
This Laboratory Grown Diamond was created by High Pressure High Temperature (HPHT) growth process.
Type II