



ELECTRONIC COPY

LABORATORY GROWN DIAMOND REPORT

April 22, 2026
IGI Report Number **LG790661454**
Description **LABORATORY GROWN DIAMOND**
Shape and Cutting Style **CUT CORNERED RECTANGULAR MODIFIED BRILLIANT**
Measurements **7.72 X 5.74 X 3.98 MM**

GRADING RESULTS

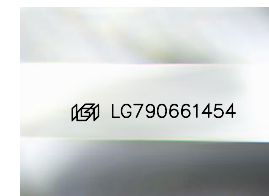
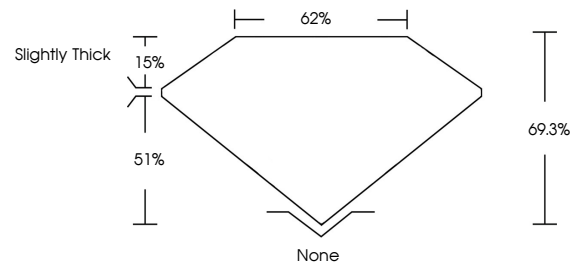
Carat Weight **1.53 CARAT**
Color Grade **F**
Clarity Grade **VVS 2**

ADDITIONAL GRADING INFORMATION

Polish **EXCELLENT**
Symmetry **EXCELLENT**
Fluorescence **NONE**
Inscription(s) **IGI LG790661454**

Comments: This Laboratory Grown Diamond was created by Chemical Vapor Deposition (CVD) growth process.
Type IIa

PROPORTIONS



Sample Image Used

COLOR

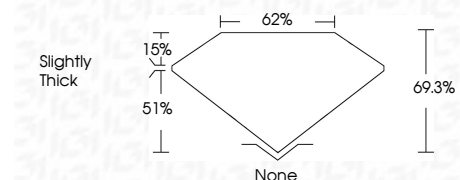
D E F G H I J Faint Very Light Light

CLARITY

FL	IF	VVS ¹⁻²	VS ¹⁻²	SI ¹⁻²	I ¹⁻³
Flawless	Internally Flawless	Very Very Slightly Included	Very Slightly Included	Slightly Included	Included



April 22, 2026
IGI Report Number **LG790661454**
Description **LABORATORY GROWN DIAMOND**
Shape and Cutting Style **CUT CORNERED RECTANGULAR MODIFIED BRILLIANT**
Measurements **7.72 X 5.74 X 3.98 MM**
GRADING RESULTS
Carat Weight **1.53 CARAT**
Color Grade **F**
Clarity Grade **VVS 2**



ADDITIONAL GRADING INFORMATION

Polish **EXCELLENT**
Symmetry **EXCELLENT**
Fluorescence **NONE**
Inscription(s) **IGI LG790661454**
Comments: This Laboratory Grown Diamond was created by Chemical Vapor Deposition (CVD) growth process.
Type IIa



IGI



April 22, 2026
IGI Report No LG790661454
CUT CORNERED RECT. MODIFIED BRILLIANT
1.53 CARAT
F
7.72 X 5.74 X 3.98 MM
VVS 2
69.3%
62%
Slightly Thick
None
EXCELLENT
EXCELLENT
NONE
IGI LG790661454

Comments: This Laboratory Grown Diamond was created by Chemical Vapor Deposition (CVD) growth process.
Type IIa