



**ELECTRONIC COPY**

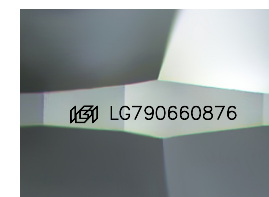
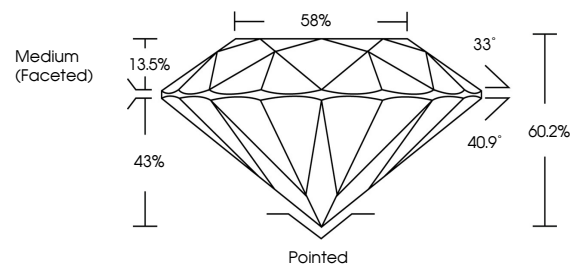
LG790660876  
Report verification at igi.org



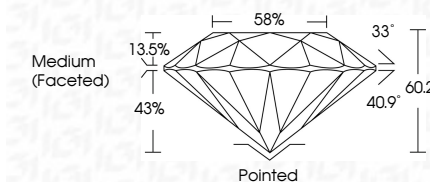
April 17, 2026  
IGI Report Number **LG790660876**  
Description **LABORATORY GROWN DIAMOND**  
Shape and Cutting Style **ROUND BRILLIANT**  
Measurements **7.42 - 7.45 X 4.48 MM**  
**GRADING RESULTS**  
Carat Weight **1.51 CARAT**  
Color Grade **D**  
Clarity Grade **VVS 1**  
Cut Grade **IDEAL**

April 17, 2026  
IGI Report Number **LG790660876**  
Description **LABORATORY GROWN DIAMOND**  
Shape and Cutting Style **ROUND BRILLIANT**  
Measurements **7.42 - 7.45 X 4.48 MM**  
**GRADING RESULTS**  
Carat Weight **1.51 CARAT**  
Color Grade **D**  
Clarity Grade **VVS 1**  
Cut Grade **IDEAL**

**PROPORTIONS**



Sample Image Used



**ADDITIONAL GRADING INFORMATION**  
Polish **EXCELLENT**  
Symmetry **EXCELLENT**  
Fluorescence **NONE**  
Inscription(s) **IGI LG790660876**  
Comments: As Grown - No indication of post-growth treatment.  
This Laboratory Grown Diamond was created by High Pressure High Temperature (HPHT) growth process.  
Type II

**COLOR**

D E F G H I J Faint Very Light Light

**CLARITY**

FL	IF	VVS <sup>1-2</sup>	VS <sup>1-2</sup>	SI <sup>1-2</sup>	I <sup>1-3</sup>
Flawless	Internally Flawless	Very Very Slightly Included	Very Slightly Included	Slightly Included	Included

**ADDITIONAL GRADING INFORMATION**

Polish **EXCELLENT**  
Symmetry **EXCELLENT**  
Fluorescence **NONE**  
Inscription(s) **IGI LG790660876**  
Comments: As Grown - No indication of post-growth treatment.  
This Laboratory Grown Diamond was created by High Pressure High Temperature (HPHT) growth process.  
Type II



**IGI**



April 17, 2026  
IGI Report No **LG790660876**  
**ROUND BRILLIANT**  
7.42 - 7.45 X 4.48 MM  
Carat Weight **1.51 CARAT**  
Color Grade **D**  
Clarity Grade **VVS 1**  
Cut Grade **IDEAL**  
Depth **60.2%**  
Table **58%**  
Girdle **Medium (Faceted)**  
Culet **Pointed**  
Polish **EXCELLENT**  
Symmetry **EXCELLENT**  
Fluorescence **NONE**  
Inscriptions(s) **IGI LG790660876**  
Comments: As Grown - No indication of post-growth treatment.  
This Laboratory Grown Diamond was created by High Pressure High Temperature (HPHT) growth process.  
Type II