



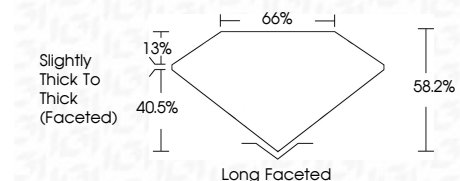
ELECTRONIC COPY

LG790659882
Report verification at igi.org



April 23, 2026
IGI Report Number **LG790659882**
Description **LABORATORY GROWN DIAMOND**
Shape and Cutting Style **CUSHION ANTIQUE BRILLIANT**
Measurements **11.06 X 8.02 X 4.67 MM**

GRADING RESULTS
Carat Weight **3.56 CARATS**
Color Grade **F**
Clarity Grade **VVS 2**



ADDITIONAL GRADING INFORMATION
Polish **EXCELLENT**
Symmetry **EXCELLENT**
Fluorescence **NONE**
Inscription(s) **IGI LG790659882**
Comments: This Laboratory Grown Diamond was created by Chemical Vapor Deposition (CVD) growth process. Type IIa



April 23, 2026
IGI Report No LG790659882
CUSHION ANTIQUE BRILLIANT
11.06 X 8.02 X 4.67 MM
3.56 CARATS
F
VVS 2
58.2%
40.5%
Slightly Thick To Thick (Faceted)
Long Faceted
EXCELLENT
EXCELLENT
NONE
IGI LG790659882
Comments: This Laboratory Grown Diamond was created by Chemical Vapor Deposition (CVD) growth process. Type IIa

LABORATORY GROWN DIAMOND REPORT

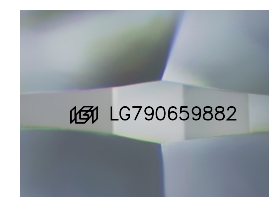
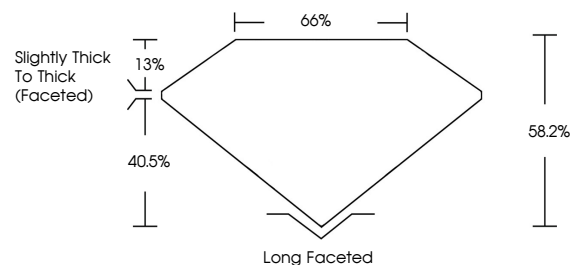
April 23, 2026
IGI Report Number **LG790659882**
Description **LABORATORY GROWN DIAMOND**
Shape and Cutting Style **CUSHION ANTIQUE BRILLIANT**
Measurements **11.06 X 8.02 X 4.67 MM**

GRADING RESULTS
Carat Weight **3.56 CARATS**
Color Grade **F**
Clarity Grade **VVS 2**

ADDITIONAL GRADING INFORMATION
Polish **EXCELLENT**
Symmetry **EXCELLENT**
Fluorescence **NONE**
Inscription(s) **IGI LG790659882**

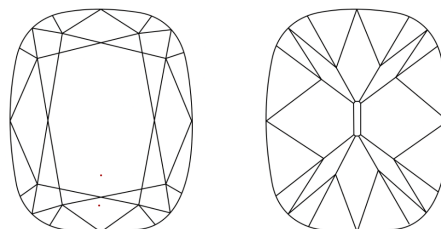
Comments: This Laboratory Grown Diamond was created by Chemical Vapor Deposition (CVD) growth process. Type IIa

PROPORTIONS



Sample Image Used

CLARITY CHARACTERISTICS



KEY TO SYMBOLS

Red symbols indicate internal characteristics.
Green symbols indicate external characteristics.

COLOR

D E F G H I J Faint Very Light Light

CLARITY

FL	IF	VVS ¹⁻²	VS ¹⁻²	SI ¹⁻²	I ¹⁻³
Flawless	Internally Flawless	Very Very Slightly Included	Very Slightly Included	Slightly Included	Included

