



ELECTRONIC COPY

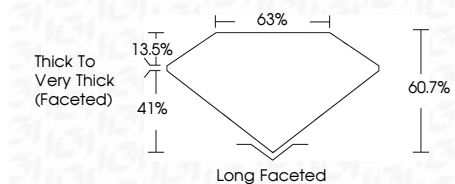
LG790658546
Report verification at igi.org



April 20, 2026
IGI Report Number **LG790658546**
Description **LABORATORY GROWN DIAMOND**
Shape and Cutting Style **CUSHION ANTIQUE BRILLIANT**
Measurements **12.78 X 9.51 X 5.77 MM**

GRADING RESULTS

Carat Weight **6.02 CARATS**
Color Grade **E**
Clarity Grade **VVS 2**



ADDITIONAL GRADING INFORMATION

Polish **EXCELLENT**
Symmetry **EXCELLENT**
Fluorescence **NONE**
Inscription(s) **IGI LG790658546**
Comments: This Laboratory Grown Diamond was created by Chemical Vapor Deposition (CVD) growth process. Type IIa



April 20, 2026
IGI Report No LG790658546
CUSHION ANTIQUE BRILLIANT
12.78 X 9.51 X 5.77 MM
6.02 CARATS
E
VVS 2
60.7%
63%
Thick to Very Thick (Faceted)
Long Faceted
EXCELLENT
EXCELLENT
NONE
IGI LG790658546
Comments: This Laboratory Grown Diamond was created by Chemical Vapor Deposition (CVD) growth process. Type IIa

LABORATORY GROWN DIAMOND REPORT

April 20, 2026
IGI Report Number **LG790658546**
Description **LABORATORY GROWN DIAMOND**
Shape and Cutting Style **CUSHION ANTIQUE BRILLIANT**
Measurements **12.78 X 9.51 X 5.77 MM**

GRADING RESULTS

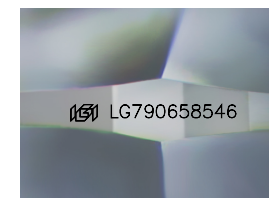
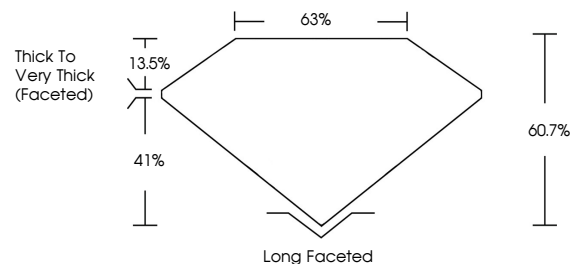
Carat Weight **6.02 CARATS**
Color Grade **E**
Clarity Grade **VVS 2**

ADDITIONAL GRADING INFORMATION

Polish **EXCELLENT**
Symmetry **EXCELLENT**
Fluorescence **NONE**
Inscription(s) **IGI LG790658546**

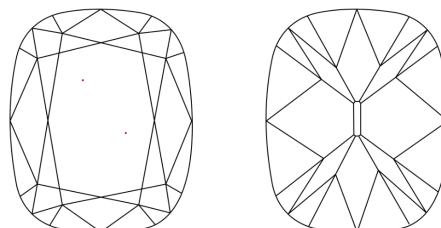
Comments: This Laboratory Grown Diamond was created by Chemical Vapor Deposition (CVD) growth process. Type IIa

PROPORTIONS



Sample Image Used

CLARITY CHARACTERISTICS



KEY TO SYMBOLS

Red symbols indicate internal characteristics.
Green symbols indicate external characteristics.

COLOR

D E F G H I J Faint Very Light Light

CLARITY

FL	IF	VVS ¹⁻²	VS ¹⁻²	SI ¹⁻²	I ¹⁻³
Flawless	Internally Flawless	Very Very Slightly Included	Very Slightly Included	Slightly Included	Included

