



ELECTRONIC COPY

LG790653139
Report verification at igi.org



May 21, 2026
IGI Report Number **LG790653139**
Description **LABORATORY GROWN DIAMOND**
Shape and Cutting Style **CUSHION MODIFIED BRILLIANT**
Measurements **10.47 X 8.14 X 5.46 MM**
GRADING RESULTS
Carat Weight **3.51 CARATS**
Color Grade **F**
Clarity Grade **VS 1**

LABORATORY GROWN DIAMOND REPORT

May 21, 2026
IGI Report Number **LG790653139**
Description **LABORATORY GROWN DIAMOND**
Shape and Cutting Style **CUSHION MODIFIED BRILLIANT**
Measurements **10.47 X 8.14 X 5.46 MM**

GRADING RESULTS

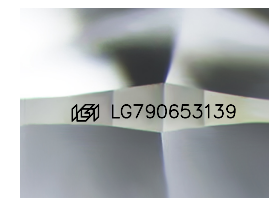
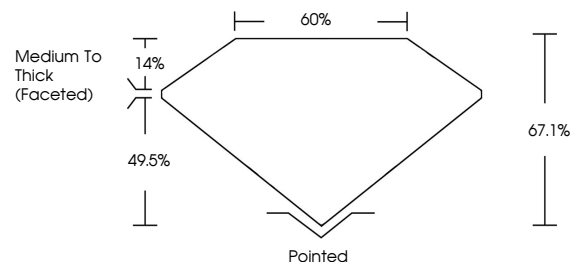
Carat Weight **3.51 CARATS**
Color Grade **F**
Clarity Grade **VS 1**

ADDITIONAL GRADING INFORMATION

Polish **EXCELLENT**
Symmetry **EXCELLENT**
Fluorescence **NONE**
Inscription(s) **IGI LG790653139**

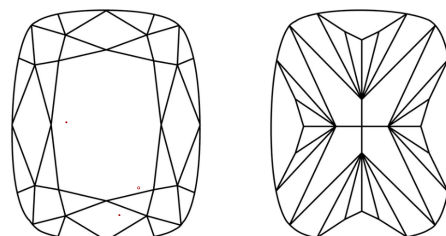
Comments: This Laboratory Grown Diamond was created by Chemical Vapor Deposition (CVD) growth process.
Type IIa

PROPORTIONS



Sample Image Used

CLARITY CHARACTERISTICS



KEY TO SYMBOLS

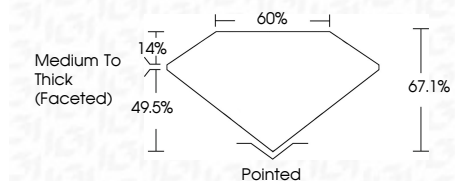
Red symbols indicate internal characteristics.
Green symbols indicate external characteristics.

COLOR

D E F G H I J Faint Very Light Light

CLARITY

FL	IF	VS ¹⁻²	VS ¹⁻²	SI ¹⁻²	I ¹⁻³
Flawless	Internally Flawless	Very Very Slightly Included	Very Slightly Included	Slightly Included	Included



ADDITIONAL GRADING INFORMATION

Polish **EXCELLENT**
Symmetry **EXCELLENT**
Fluorescence **NONE**
Inscription(s) **IGI LG790653139**
Comments: This Laboratory Grown Diamond was created by Chemical Vapor Deposition (CVD) growth process.
Type IIa



May 21, 2026
IGI Report No **LG790653139**
CUSHION MODIFIED BRILLIANT
10.47 X 8.14 X 5.46 MM
Carat Weight **3.51 CARATS**
Color Grade **F**
Clarity Grade **VS 1**
Depth **67.1%**
Table **60%**
Girdle **Medium To Thick (Faceted)**
Culet **Pointed**
Polish **EXCELLENT**
Symmetry **EXCELLENT**
Fluorescence **NONE**
Inscription(s) **IGI LG790653139**
Comments: This Laboratory Grown Diamond was created by Chemical Vapor Deposition (CVD) growth process.
Type IIa