



ELECTRONIC COPY

LG790653027
Report verification at igi.org



April 23, 2026

IGI Report Number **LG790653027**

Description **LABORATORY GROWN DIAMOND**

Shape and Cutting Style **ROUND BRILLIANT**

Measurements **6.49 - 6.52 X 3.91 MM**

GRADING RESULTS

Carat Weight **1.00 CARAT**

Color Grade **E**

Clarity Grade **VVS 2**

Cut Grade **IDEAL**

April 23, 2026
IGI Report Number **LG790653027**
Description **LABORATORY GROWN DIAMOND**
Shape and Cutting Style **ROUND BRILLIANT**
Measurements **6.49 - 6.52 X 3.91 MM**

GRADING RESULTS

Carat Weight **1.00 CARAT**

Color Grade **E**

Clarity Grade **VVS 2**

Cut Grade **IDEAL**

ADDITIONAL GRADING INFORMATION

Polish **VERY GOOD**

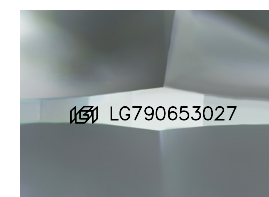
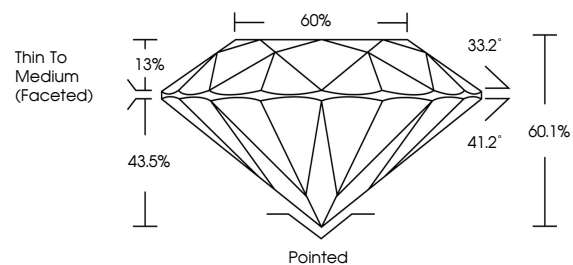
Symmetry **EXCELLENT**

Fluorescence **NONE**

Inscription(s) **IGI LG790653027**

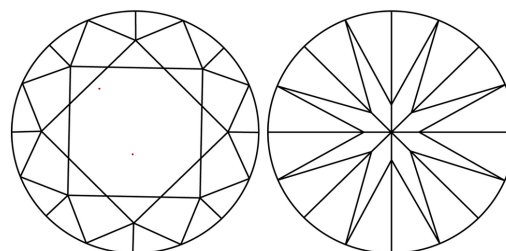
Comments: This Laboratory Grown Diamond was created by Chemical Vapor Deposition (CVD) growth process.
Type IIa

PROPORTIONS



Sample Image Used

CLARITY CHARACTERISTICS



KEY TO SYMBOLS

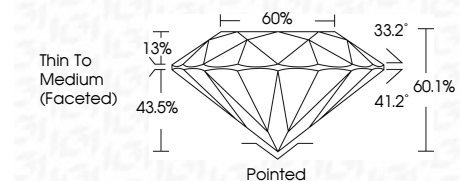
Red symbols indicate internal characteristics.
Green symbols indicate external characteristics.

COLOR

D E F G H I J Faint Very Light Light

CLARITY

FL	IF	VVS ¹⁻²	VS ¹⁻²	SI ¹⁻²	I ¹⁻³
Flawless	Internally Flawless	Very Very Slightly Included	Very Slightly Included	Slightly Included	Included



ADDITIONAL GRADING INFORMATION

Polish **VERY GOOD**

Symmetry **EXCELLENT**

Fluorescence **NONE**

Inscription(s) **IGI LG790653027**

Comments: This Laboratory Grown Diamond was created by Chemical Vapor Deposition (CVD) growth process.
Type IIa



April 23, 2026
IGI Report No. LG790653027
ROUND BRILLIANT
6.49 - 6.52 X 3.91 MM
1.00 CARAT
E
VVS 2
IDEAL
60.1%
60%
Thin To Medium (Faceted)
Pointed
VERY GOOD
EXCELLENT
NONE
IGI LG790653027

Culet
Polish
Symmetry
Fluorescence
Inscription(s)

Comments: This Laboratory Grown Diamond was created by Chemical Vapor Deposition (CVD) growth process.
Type IIa