



ELECTRONIC COPY

LG790652636
Report verification at igi.org



April 23, 2026
IGI Report Number **LG790652636**
Description **LABORATORY GROWN DIAMOND**
Shape and Cutting Style **CUT CORNERED
RECTANGULAR MODIFIED
BRILLIANT**
Measurements **10.27 X 7.04 X 4.68 MM**
GRADING RESULTS
Carat Weight **3.04 CARATS**
Color Grade **FANCY INTENSE YELLOW**
Clarity Grade **VS 1**

April 23, 2026
IGI Report Number **LG790652636**
Description **LABORATORY GROWN DIAMOND**
Shape and Cutting Style **CUT CORNERED RECTANGULAR
MODIFIED BRILLIANT**
Measurements **10.27 X 7.04 X 4.68 MM**

GRADING RESULTS

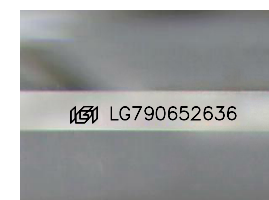
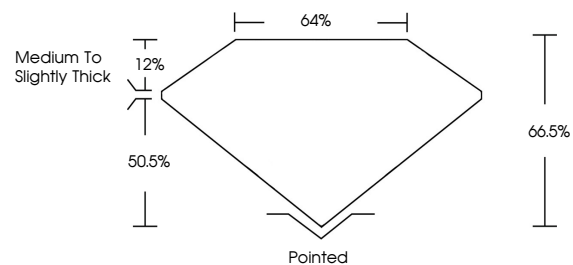
Carat Weight **3.04 CARATS**
Color Grade **FANCY INTENSE YELLOW**
Clarity Grade **VS 1**

ADDITIONAL GRADING INFORMATION

Polish **VERY GOOD**
Symmetry **VERY GOOD**
Fluorescence **NONE**
Inscription(s) **IGI LG790652636**

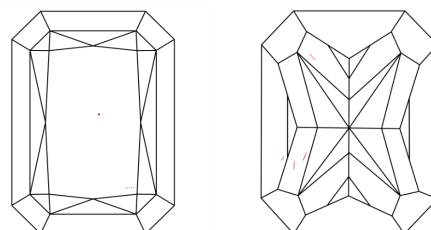
Comments: This Laboratory Grown Diamond was created by Chemical Vapor Deposition (CVD) growth process.

PROPORTIONS



Sample Image Used

CLARITY CHARACTERISTICS



KEY TO SYMBOLS

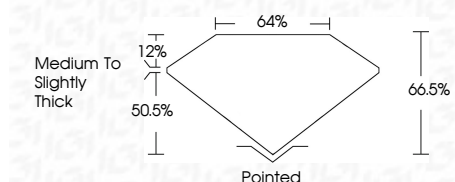
Red symbols indicate internal characteristics.
Green symbols indicate external characteristics.

COLOR

D E F G H I J Faint Very Light Light

CLARITY

FL	IF	VS ¹⁻²	VS ¹⁻²	SI ¹⁻²	I ¹⁻³
Flawless	Internally Flawless	Very Very Slightly Included	Very Slightly Included	Slightly Included	Included



ADDITIONAL GRADING INFORMATION

Polish **VERY GOOD**
Symmetry **VERY GOOD**
Fluorescence **NONE**
Inscription(s) **IGI LG790652636**
Comments: This Laboratory Grown Diamond was created by Chemical Vapor Deposition (CVD) growth process.



IGI



April 23, 2026
IGI Report No LG790652636
CUT CORNERED RECT. MODIFIED BRILLIANT
10.27 X 7.04 X 4.68 MM
Carat Weight 3.04 CARATS
Color Grade FANCY INTENSE YELLOW
Clarity Grade VS 1
Table 64%
Girdle 44%
Medium to Slightly Thick
Culet Pointed
Polish VERY GOOD
Symmetry VERY GOOD
Fluorescence NONE
Inscription(s) IGI LG790652636

Comments: This Laboratory Grown Diamond was created by Chemical Vapor Deposition (CVD) growth process.