



**ELECTRONIC COPY**

LG790652635  
Report verification at igi.org



April 24, 2026  
IGI Report Number **LG790652635**  
Description **LABORATORY GROWN DIAMOND**  
Shape and Cutting Style **CUSHION MODIFIED BRILLIANT**  
Measurements **10.56 X 9.89 X 6.54 MM**  
**GRADING RESULTS**  
Carat Weight **6.06 CARATS**  
Color Grade **FANCY VIVID YELLOW**  
Clarity Grade **VS 1**

April 24, 2026  
IGI Report Number **LG790652635**  
Description **LABORATORY GROWN DIAMOND**  
Shape and Cutting Style **CUSHION MODIFIED BRILLIANT**  
Measurements **10.56 X 9.89 X 6.54 MM**

**GRADING RESULTS**

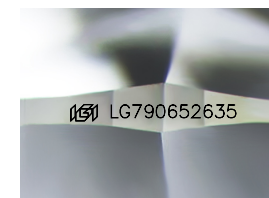
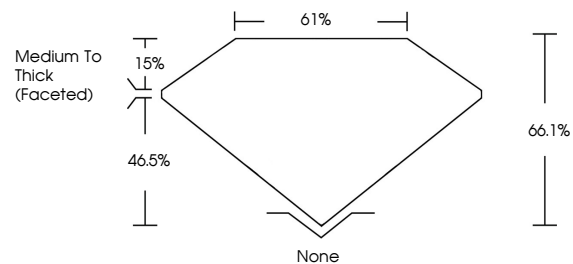
Carat Weight **6.06 CARATS**  
Color Grade **FANCY VIVID YELLOW**  
Clarity Grade **VS 1**

**ADDITIONAL GRADING INFORMATION**

Polish **EXCELLENT**  
Symmetry **VERY GOOD**  
Fluorescence **NONE**  
Inscription(s) **IGI LG790652635**

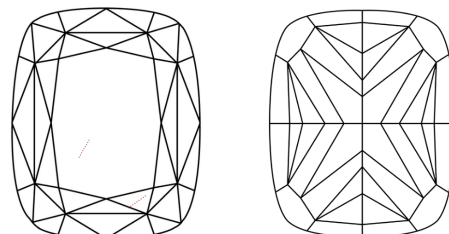
Comments: This Laboratory Grown Diamond was created by Chemical Vapor Deposition (CVD) growth process.

**PROPORTIONS**



Sample Image Used

**CLARITY CHARACTERISTICS**



**KEY TO SYMBOLS**

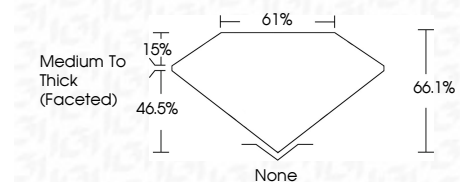
Red symbols indicate internal characteristics.  
Green symbols indicate external characteristics.

**COLOR**

D E F G H I J Faint Very Light Light

**CLARITY**

FL	IF	VS <sup>1-2</sup>	VS <sup>1-2</sup>	SI <sup>1-2</sup>	I <sup>1-3</sup>
Flawless	Internally Flawless	Very Very Slightly Included	Very Slightly Included	Slightly Included	Included



**ADDITIONAL GRADING INFORMATION**

Polish **EXCELLENT**  
Symmetry **VERY GOOD**  
Fluorescence **NONE**  
Inscription(s) **IGI LG790652635**  
Comments: This Laboratory Grown Diamond was created by Chemical Vapor Deposition (CVD) growth process.



April 24, 2026  
IGI Report No **LG790652635**  
**CUSHION MODIFIED BRILLIANT**  
**6.06 CARATS**  
Carat Weight **FANCY VIVID YELLOW**  
Color Grade **VS 1**  
Depth **66.1%**  
Table **61%**  
Girdle **Medium To Thick (Faceted)**  
Culet **None**  
Polish **EXCELLENT**  
Symmetry **VERY GOOD**  
Fluorescence **NONE**  
Inscription(s) **IGI LG790652635**  
Comments: This Laboratory Grown Diamond was created by Chemical Vapor Deposition (CVD) growth process.