



ELECTRONIC COPY

LG790652626
Report verification at igi.org



April 22, 2026
IGI Report Number **LG790652626**
Description **LABORATORY GROWN DIAMOND**
Shape and Cutting Style **CUT CORNERED
RECTANGULAR MODIFIED
BRILLIANT**
Measurements **7.48 X 5.21 X 3.52 MM**
GRADING RESULTS
Carat Weight **1.19 CARAT**
Color Grade **FANCY INTENSE PINK**
Clarity Grade **VS 1**

April 22, 2026
IGI Report Number **LG790652626**
Description **LABORATORY GROWN DIAMOND**
Shape and Cutting Style **CUT CORNERED RECTANGULAR
MODIFIED BRILLIANT**
Measurements **7.48 X 5.21 X 3.52 MM**

GRADING RESULTS

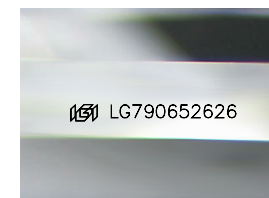
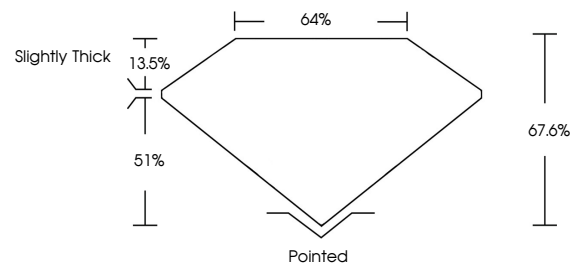
Carat Weight **1.19 CARAT**
Color Grade **FANCY INTENSE PINK**
Clarity Grade **VS 1**

ADDITIONAL GRADING INFORMATION

Polish **EXCELLENT**
Symmetry **EXCELLENT**
Fluorescence **SLIGHT**
Inscription(s) **IGI LG790652626**

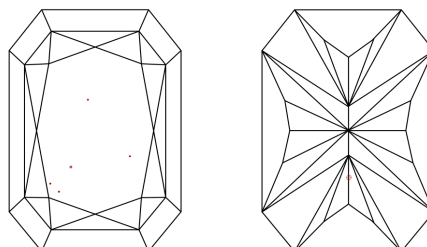
Comments: This Laboratory Grown Diamond was created by Chemical Vapor Deposition (CVD) growth process. Indications of post-growth treatment.

PROPORTIONS



Sample Image Used

CLARITY CHARACTERISTICS



KEY TO SYMBOLS

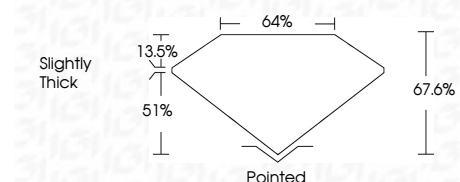
Red symbols indicate internal characteristics.
Green symbols indicate external characteristics.

COLOR

D E F G H I J Faint Very Light Light

CLARITY

FL	IF	VS ¹⁻²	VS ¹⁻²	SI ¹⁻²	I ¹⁻³
Flawless	Internally Flawless	Very Very Slightly Included	Very Slightly Included	Slightly Included	Included



ADDITIONAL GRADING INFORMATION

Polish **EXCELLENT**
Symmetry **EXCELLENT**
Fluorescence **SLIGHT**
Inscription(s) **IGI LG790652626**
Comments: This Laboratory Grown Diamond was created by Chemical Vapor Deposition (CVD) growth process. Indications of post-growth treatment.



April 22, 2026
IGI Report No. LG790652626
CUT CORNERED RECT. MODIFIED BRILLIANT
7.48 X 5.21 X 3.52 MM
1.19 CARAT
FANCY INTENSE PINK
VS 1
67.6%
51%
13.5%
Slightly Thick
Pointed
EXCELLENT
EXCELLENT
SLIGHT
IGI LG790652626
Comments: This Laboratory Grown Diamond was created by Chemical Vapor Deposition (CVD) growth process. Indications of post-growth treatment.