



ELECTRONIC COPY

LG790652142
Report verification at igi.org



April 20, 2026

IGI Report Number **LG790652142**

Description **LABORATORY GROWN DIAMOND**

Shape and Cutting Style **ROUND BRILLIANT**

Measurements **6.51 - 6.53 X 3.96 MM**

GRADING RESULTS

Carat Weight **1.02 CARAT**

Color Grade **FANCY PINK**

Clarity Grade **VS 2**

Cut Grade **IDEAL**

April 20, 2026

IGI Report Number **LG790652142**

Description **LABORATORY GROWN DIAMOND**

Shape and Cutting Style **ROUND BRILLIANT**

Measurements **6.51 - 6.53 X 3.96 MM**

GRADING RESULTS

Carat Weight **1.02 CARAT**

Color Grade **FANCY PINK**

Clarity Grade **VS 2**

Cut Grade **IDEAL**

ADDITIONAL GRADING INFORMATION

Polish **EXCELLENT**

Symmetry **EXCELLENT**

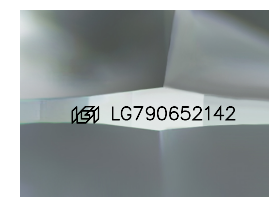
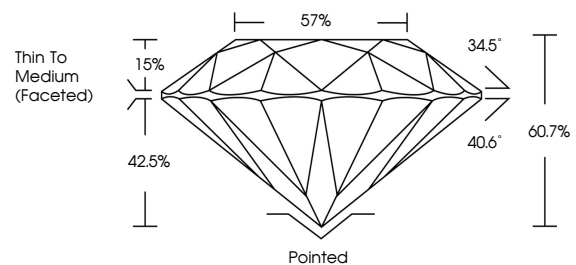
Fluorescence **SLIGHT**

Inscription(s) **LG790652142**

Comments: This Laboratory Grown Diamond was created by Chemical Vapor Deposition (CVD) growth process.

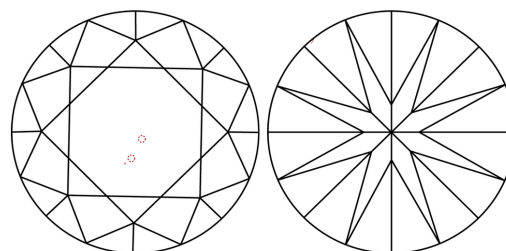
Indications of post-growth treatment.

PROPORTIONS



Sample Image Used

CLARITY CHARACTERISTICS



KEY TO SYMBOLS

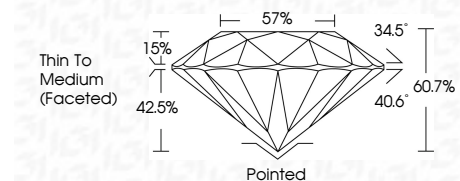
Red symbols indicate internal characteristics.
Green symbols indicate external characteristics.

COLOR

D E F G H I J Faint Very Light Light

CLARITY

FL	IF	VS ¹⁻²	VS ¹⁻²	SI ¹⁻²	I ¹⁻³
Flawless	Internally Flawless	Very Very Slightly Included	Very Slightly Included	Slightly Included	Included



ADDITIONAL GRADING INFORMATION

Polish **EXCELLENT**

Symmetry **EXCELLENT**

Fluorescence **SLIGHT**

Inscription(s) **LG790652142**

Comments: This Laboratory Grown Diamond was created by Chemical Vapor Deposition (CVD) growth process. Indications of post-growth treatment.



April 20, 2026
IGI Report No LG790652142
ROUND BRILLIANT

1.02 CARAT
FANCY PINK

VS 2
IDEAL

6.51 - 6.53 X 3.96 MM
60.7%
57%
Thin To Medium (Faceted)

Pointed
EXCELLENT
EXCELLENT
SLIGHT
SLIGHT
IGI LG790652142

Comments: This Laboratory Grown Diamond was created by Chemical Vapor Deposition (CVD) growth process. Indications of post-growth treatment.