



**ELECTRONIC COPY**

LG790651874  
Report verification at igi.org



April 21, 2026

IGI Report Number **LG790651874**

Description **LABORATORY GROWN DIAMOND**

Shape and Cutting Style **ROUND BRILLIANT**

Measurements **9.26 - 9.32 X 5.70 MM**

**GRADING RESULTS**

Carat Weight **3.05 CARATS**

Color Grade **FANCY INTENSE PINK**

Clarity Grade **VVS 2**

Cut Grade **IDEAL**

April 21, 2026  
IGI Report Number **LG790651874**  
Description **LABORATORY GROWN DIAMOND**  
Shape and Cutting Style **ROUND BRILLIANT**  
Measurements **9.26 - 9.32 X 5.70 MM**

**GRADING RESULTS**

Carat Weight **3.05 CARATS**

Color Grade **FANCY INTENSE PINK**

Clarity Grade **VVS 2**

Cut Grade **IDEAL**

**ADDITIONAL GRADING INFORMATION**

Polish **VERY GOOD**

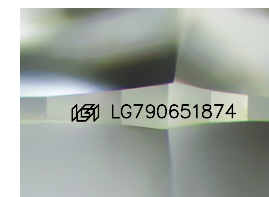
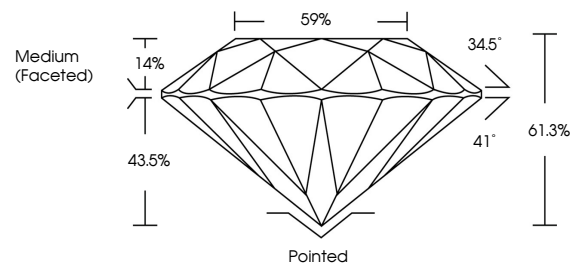
Symmetry **EXCELLENT**

Fluorescence **SLIGHT**

Inscription(s) **LG790651874**

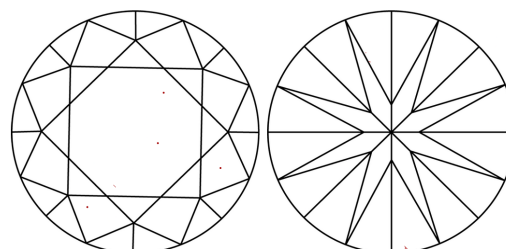
Comments: This Laboratory Grown Diamond was created by Chemical Vapor Deposition (CVD) growth process.  
Indications of post-growth treatment.

**PROPORTIONS**



Sample Image Used

**CLARITY CHARACTERISTICS**



**KEY TO SYMBOLS**

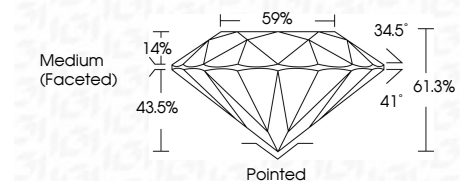
Red symbols indicate internal characteristics.  
Green symbols indicate external characteristics.

**COLOR**

D E F G H I J Faint Very Light Light

**CLARITY**

FL	IF	VVS <sup>1-2</sup>	VS <sup>1-2</sup>	SI <sup>1-2</sup>	I <sup>1-3</sup>
Flawless	Internally Flawless	Very Very Slightly Included	Very Slightly Included	Slightly Included	Included



**ADDITIONAL GRADING INFORMATION**

Polish **VERY GOOD**

Symmetry **EXCELLENT**

Fluorescence **SLIGHT**

Inscription(s) **LG790651874**

Comments: This Laboratory Grown Diamond was created by Chemical Vapor Deposition (CVD) growth process.  
Indications of post-growth treatment.



April 21, 2026  
IGI Report No LG790651874  
**ROUND BRILLIANT**

**3.05 CARATS**  
Carat Weight  
**FANCY INTENSE PINK**  
Color Grade

**VVS 2**  
Clarity Grade  
**IDEAL**  
Cut Grade  
**61.3%**  
Depth  
**59%**  
Girdle  
Medium (Faceted)

Pointed  
**VERY GOOD**  
Polish  
**EXCELLENT**  
Symmetry  
**SLIGHT**  
Fluorescence  
**SLIGHT**  
Inscriptions(s)  
 LG790651874

Comments: This Laboratory Grown Diamond was created by Chemical Vapor Deposition (CVD) growth process.  
Indications of post-growth treatment.