



**ELECTRONIC COPY**

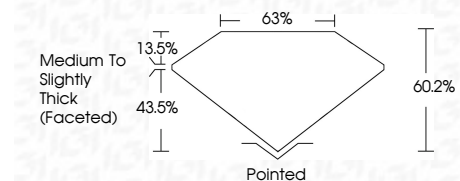
LG790651835  
Report verification at igi.org



April 20, 2026  
IGI Report Number **LG790651835**  
Description **LABORATORY GROWN DIAMOND**  
Shape and Cutting Style **ROUND MODIFIED BRILLIANT**  
Measurements **6.37 - 6.36 X 3.83 MM**

**GRADING RESULTS**

Carat Weight **1.02 CARAT**  
Color Grade **G**  
Clarity Grade **VVS 2**



**ADDITIONAL GRADING INFORMATION**

Polish **EXCELLENT**  
Symmetry **EXCELLENT**  
Fluorescence **NONE**  
Inscription(s) **IGI LG790651835**  
Comments: This Laboratory Grown Diamond was created by Chemical Vapor Deposition (CVD) growth process. Type IIa



April 20, 2026  
IGI Report No LG790651835  
**ROUND MODIFIED BRILLIANT**  
6.37 - 6.36 X 3.83 MM  
1.02 CARAT  
G  
VVS 2  
60.2%  
63%  
Medium to Slightly Thick (Faceted)  
Pointed  
EXCELLENT  
EXCELLENT  
NONE  
IGI LG790651835  
Comments: This Laboratory Grown Diamond was created by Chemical Vapor Deposition (CVD) growth process. Type IIa

**LABORATORY GROWN DIAMOND REPORT**

April 20, 2026  
IGI Report Number **LG790651835**  
Description **LABORATORY GROWN DIAMOND**  
Shape and Cutting Style **ROUND MODIFIED BRILLIANT**  
Measurements **6.37 - 6.36 X 3.83 MM**

**GRADING RESULTS**

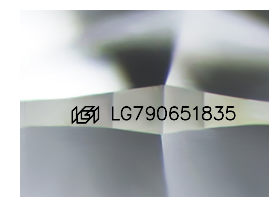
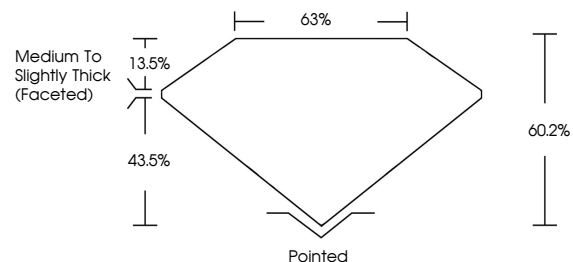
Carat Weight **1.02 CARAT**  
Color Grade **G**  
Clarity Grade **VVS 2**

**ADDITIONAL GRADING INFORMATION**

Polish **EXCELLENT**  
Symmetry **EXCELLENT**  
Fluorescence **NONE**  
Inscription(s) **IGI LG790651835**

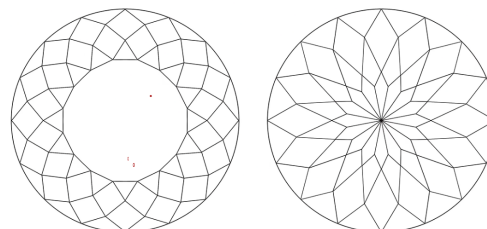
Comments: This Laboratory Grown Diamond was created by Chemical Vapor Deposition (CVD) growth process. Type IIa

**PROPORTIONS**



Sample Image Used

**CLARITY CHARACTERISTICS**



**KEY TO SYMBOLS**

Red symbols indicate internal characteristics.  
Green symbols indicate external characteristics.

**COLOR**

D E F G H I J Faint Very Light Light

**CLARITY**

FL	IF	VVS <sup>1-2</sup>	VS <sup>1-2</sup>	SI <sup>1-2</sup>	I <sup>1-3</sup>
Flawless	Internally Flawless	Very Very Slightly Included	Very Slightly Included	Slightly Included	Included

