



ELECTRONIC COPY

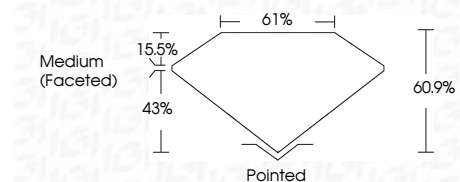
LG790651615
Report verification at igi.org



April 22, 2026
IGI Report Number **LG790651615**
Description **LABORATORY GROWN DIAMOND**
Shape and Cutting Style **ROUND MODIFIED BRILLIANT**
Measurements **6.34 - 6.34 X 3.86 MM**

GRADING RESULTS

Carat Weight **1.03 CARAT**
Color Grade **F**
Clarity Grade **VS 1**

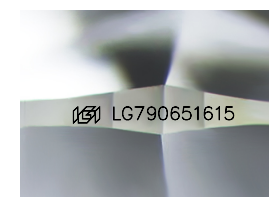


ADDITIONAL GRADING INFORMATION

Polish **EXCELLENT**
Symmetry **EXCELLENT**
Fluorescence **NONE**
Inscription(s) **IGI LG790651615**
Comments: This Laboratory Grown Diamond was created by Chemical Vapor Deposition (CVD) growth process. Type IIa

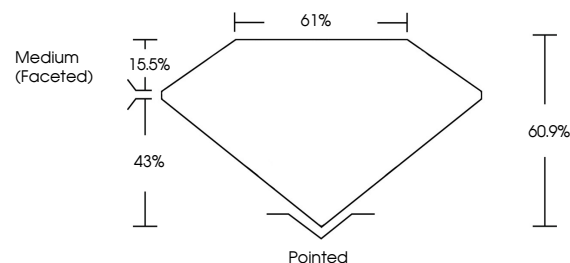


April 22, 2026
IGI Report No **LG790651615**
ROUND MODIFIED BRILLIANT
6.34 - 6.34 X 3.86 MM
Carat Weight **1.03 CARAT**
Color Grade **F**
Clarity Grade **VS 1**
Depth **40.9%**
Table **15.5%**
Girdle **Medium (Faceted)**
Culet **Pointed**
Polish **EXCELLENT**
Symmetry **EXCELLENT**
Fluorescence **NONE**
Inscription(s) **IGI LG790651615**
Comments: This Laboratory Grown Diamond was created by Chemical Vapor Deposition (CVD) growth process. Type IIa

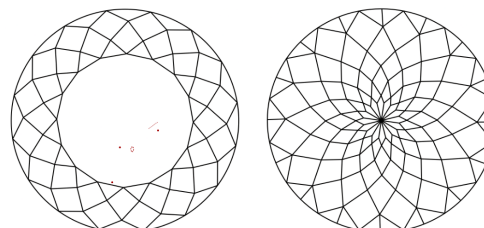


Sample Image Used

PROPORTIONS



CLARITY CHARACTERISTICS



KEY TO SYMBOLS

Red symbols indicate internal characteristics.
Green symbols indicate external characteristics.

COLOR

D E F G H I J Faint Very Light Light

CLARITY

FL	IF	VS ¹⁻²	VS ¹⁻²	SI ¹⁻²	I ¹⁻³
Flawless	Internally Flawless	Very Very Slightly Included	Very Slightly Included	Slightly Included	Included

