



**ELECTRONIC COPY**

LG790651603  
Report verification at igi.org



April 21, 2026  
IGI Report Number **LG790651603**  
Description **LABORATORY GROWN DIAMOND**  
Shape and Cutting Style **PRINCESS CUT**  
Measurements **7.08 X 6.85 X 4.61 MM**  
**GRADING RESULTS**  
Carat Weight **2.01 CARATS**  
Color Grade **FANCY LIGHT YELLOW**  
Clarity Grade **VS 2**

April 21, 2026  
IGI Report Number **LG790651603**  
Description **LABORATORY GROWN DIAMOND**  
Shape and Cutting Style **PRINCESS CUT**  
Measurements **7.08 X 6.85 X 4.61 MM**

**GRADING RESULTS**

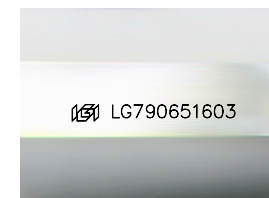
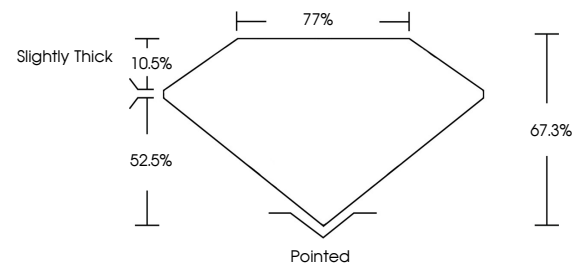
Carat Weight **2.01 CARATS**  
Color Grade **FANCY LIGHT YELLOW**  
Clarity Grade **VS 2**

**ADDITIONAL GRADING INFORMATION**

Polish **EXCELLENT**  
Symmetry **EXCELLENT**  
Fluorescence **NONE**  
Inscription(s) **IGI LG790651603**

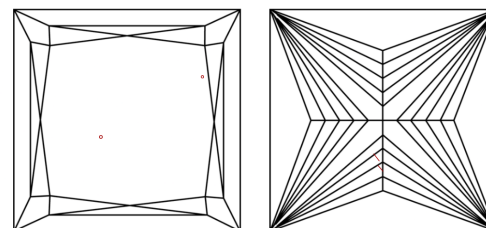
Comments: This Laboratory Grown Diamond was created by Chemical Vapor Deposition (CVD) growth process.

**PROPORTIONS**



Sample Image Used

**CLARITY CHARACTERISTICS**



**KEY TO SYMBOLS**

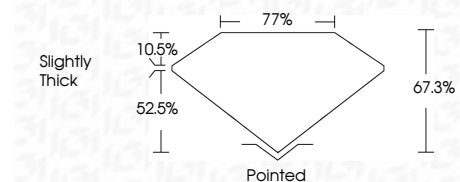
Red symbols indicate internal characteristics.  
Green symbols indicate external characteristics.

**COLOR**

D E F G H I J Faint Very Light Light

**CLARITY**

FL	IF	VS <sup>1-2</sup>	VS <sup>1-2</sup>	SI <sup>1-2</sup>	I <sup>1-3</sup>
Flawless	Internally Flawless	Very Very Slightly Included	Very Slightly Included	Slightly Included	Included



**ADDITIONAL GRADING INFORMATION**

Polish **EXCELLENT**  
Symmetry **EXCELLENT**  
Fluorescence **NONE**  
Inscription(s) **IGI LG790651603**  
Comments: This Laboratory Grown Diamond was created by Chemical Vapor Deposition (CVD) growth process.



**IGI**



April 21, 2026  
IGI Report No **LG790651603**  
**PRINCESS CUT**  
**2.01 CARATS**  
Carat Weight **FANCY LIGHT YELLOW**  
Color Grade **VS 2**  
Depth **67.3%**  
Table **77%**  
Girdle **Slightly Thick**  
Culet **Pointed**  
Polish **EXCELLENT**  
Symmetry **EXCELLENT**  
Fluorescence **NONE**  
Inscription(s) **IGI LG790651603**  
Comments: This Laboratory Grown Diamond was created by Chemical Vapor Deposition (CVD) growth process.