



ELECTRONIC COPY

LG790651153
Report verification at igi.org



April 16, 2026

IGI Report Number **LG790651153**

Description **LABORATORY GROWN DIAMOND**

Shape and Cutting Style **EMERALD CUT**

Measurements **8.62 X 6.28 X 4.07 MM**

GRADING RESULTS

Carat Weight **2.21 CARATS**

Color Grade **FANCY VIVID GREEN**

Clarity Grade **VVS 1**

April 16, 2026
IGI Report Number **LG790651153**
Description **LABORATORY GROWN DIAMOND**
Shape and Cutting Style **EMERALD CUT**
Measurements **8.62 X 6.28 X 4.07 MM**

GRADING RESULTS

Carat Weight **2.21 CARATS**

Color Grade **FANCY VIVID GREEN**

Clarity Grade **VVS 1**

ADDITIONAL GRADING INFORMATION

Polish **EXCELLENT**

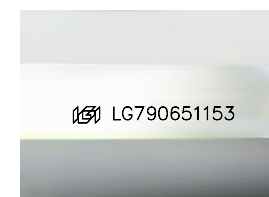
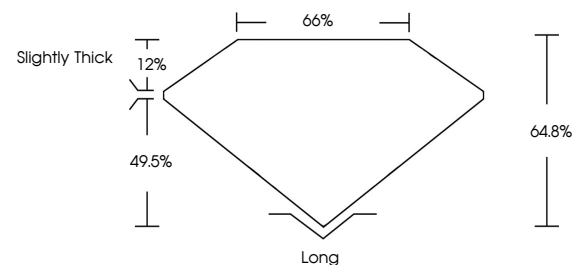
Symmetry **EXCELLENT**

Fluorescence **NONE**

Inscription(s) **IGI LG790651153**

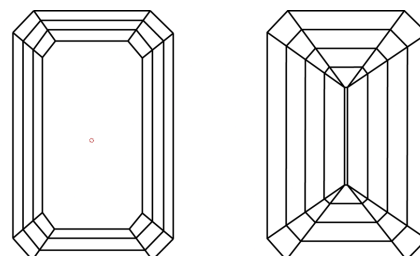
Comments: This Laboratory Grown Diamond was created by High Pressure High Temperature (HPHT) growth process. Indications of post-growth treatment.

PROPORTIONS



Sample Image Used

CLARITY CHARACTERISTICS



KEY TO SYMBOLS

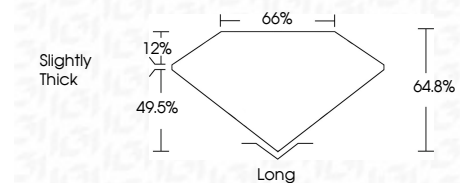
Red symbols indicate internal characteristics.
Green symbols indicate external characteristics.

COLOR

D E F G H I J Faint Very Light Light

CLARITY

FL	IF	VVS ¹⁻²	VS ¹⁻²	SI ¹⁻²	I ¹⁻³
Flawless	Internally Flawless	Very Very Slightly Included	Very Slightly Included	Slightly Included	Included



ADDITIONAL GRADING INFORMATION

Polish **EXCELLENT**

Symmetry **EXCELLENT**

Fluorescence **NONE**

Inscription(s) **IGI LG790651153**

Comments: This Laboratory Grown Diamond was created by High Pressure High Temperature (HPHT) growth process. Indications of post-growth treatment.



IGI



April 16, 2026
IGI Report No **LG790651153**
EMERALD CUT
8.62 X 6.28 X 4.07 MM
Carat Weight **2.21 CARATS**
Color Grade **FANCY VIVID GREEN**
Clarity Grade **VVS 1**
Depth **64.8%**
Table **66%**
Girdle **Slightly Thick**
Culet **Long**
Polish **EXCELLENT**
Symmetry **EXCELLENT**
Fluorescence **NONE**
Inscription(s) **IGI LG790651153**
Comments: This Laboratory Grown Diamond was created by High Pressure High Temperature (HPHT) growth process. Indications of post-growth treatment.