



ELECTRONIC COPY

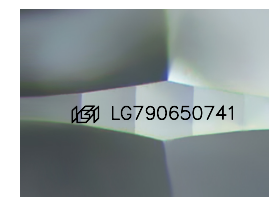
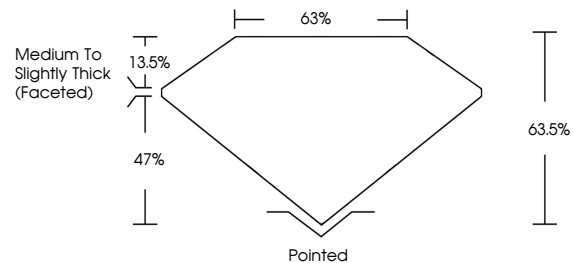
LG790650741 Report verification at igi.org



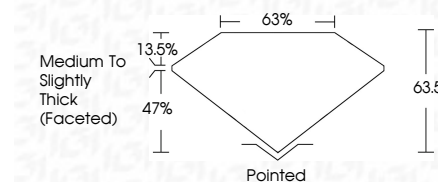
April 22, 2026 IGI Report Number LG790650741 Description LABORATORY GROWN DIAMOND Shape and Cutting Style CUSHION MODIFIED BRILLIANT Measurements 8.82 X 7.01 X 4.45 MM GRADING RESULTS Carat Weight 2.08 CARATS Color Grade FANCY VIVID BLUE Clarity Grade VS 1

April 22, 2026 IGI Report Number LG790650741 Description LABORATORY GROWN DIAMOND Shape and Cutting Style CUSHION MODIFIED BRILLIANT Measurements 8.82 X 7.01 X 4.45 MM GRADING RESULTS Carat Weight 2.08 CARATS Color Grade FANCY VIVID BLUE Clarity Grade VS 1

PROPORTIONS



Sample Image Used



ADDITIONAL GRADING INFORMATION

Polish EXCELLENT Symmetry EXCELLENT Fluorescence NONE Inscription(s) LG790650741

Comments: This Laboratory Grown Diamond was created by Chemical Vapor Deposition (CVD) growth process. Indications of post-growth treatment.

ADDITIONAL GRADING INFORMATION

Polish EXCELLENT Symmetry EXCELLENT Fluorescence NONE Inscription(s) LG790650741 Comments: This Laboratory Grown Diamond was created by Chemical Vapor Deposition (CVD) growth process. Indications of post-growth treatment.

COLOR

D E F G H I J Faint Very Light Light

CLARITY

FL IF VS 1-2 VS 1-2 SI 1-2 I 1-3 Flawless Internally Flawless Very Very Slightly Included Very Slightly Included Slightly Included Included



IGI



April 22, 2026 IGI Report No LG790650741 CUSHION MODIFIED BRILLIANT 8.82 X 7.01 X 4.45 MM 2.08 CARATS FANCY VIVID BLUE VS 1 63.5% 47% Medium to Slightly Thick (Faceted) Polished EXCELLENT EXCELLENT NONE NONE LG790650741

Comments: This Laboratory Grown Diamond was created by Chemical Vapor Deposition (CVD) growth process. Indications of post-growth treatment.