



ELECTRONIC COPY

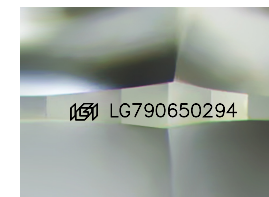
LG790650294
Report verification at igi.org



April 11, 2026
IGI Report Number LG790650294
Description LABORATORY GROWN DIAMOND
Shape and Cutting Style ROUND BRILLIANT
Measurements 7.36 - 7.42 X 4.64 MM

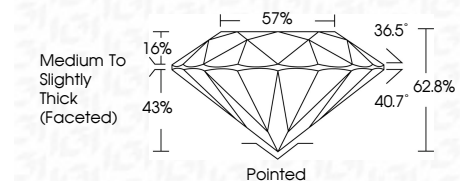
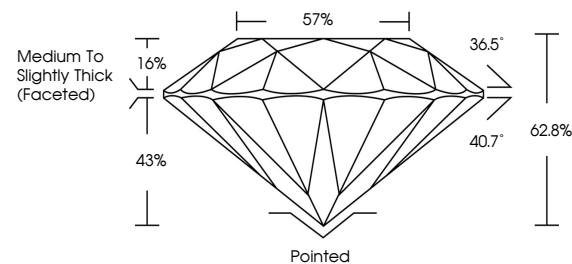
GRADING RESULTS

Carat Weight 1.58 CARAT
Color Grade E
Clarity Grade VVS 2
Cut Grade EXCELLENT

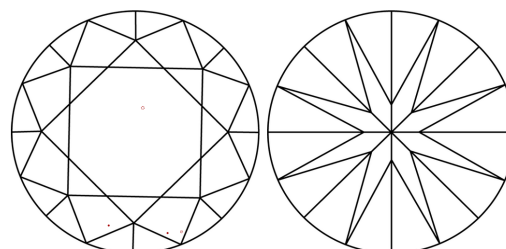


Sample Image Used

PROPORTIONS



CLARITY CHARACTERISTICS



KEY TO SYMBOLS

Red symbols indicate internal characteristics.
Green symbols indicate external characteristics.

COLOR

D E F G H I J Faint Very Light Light

CLARITY

FL IF VVS 1-2 VS 1-2 SI 1-2 I 1-3
Flawless Internally Flawless Very Very Slightly Included Very Slightly Included Slightly Included Included

ADDITIONAL GRADING INFORMATION

Polish EXCELLENT
Symmetry EXCELLENT
Fluorescence NONE
Inscription(s) IGI LG790650294
Comments: This Laboratory Grown Diamond was created by Chemical Vapor Deposition (CVD) growth process. Type IIa



April 11, 2026
IGI Report No LG790650294
ROUND BRILLIANT
1.58 CARAT E
Color Grade EXCELLENT
Clarity Grade VVS 2
Depth 62.8%
Table 57%
Girdle Medium To Slightly Thick (Faceted)
Culet Pointed
Polish EXCELLENT
Symmetry EXCELLENT
Fluorescence NONE
Inscription(s) IGI LG790650294
Comments: This Laboratory Grown Diamond was created by Chemical Vapor Deposition (CVD) growth process. Type IIa