



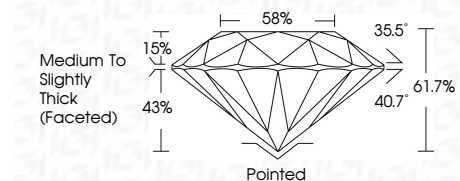
ELECTRONIC COPY

LG790650214 Report verification at igi.org



April 9, 2026 IGI Report Number LG790650214 Description LABORATORY GROWN DIAMOND Shape and Cutting Style ROUND BRILLIANT Measurements 7.27 - 7.31 X 4.50 MM

GRADING RESULTS Carat Weight 1.49 CARAT Color Grade E Clarity Grade VVS 2 Cut Grade IDEAL



ADDITIONAL GRADING INFORMATION Polish EXCELLENT Symmetry EXCELLENT Fluorescence NONE Inscription(s) IGI LG790650214 Comments: This Laboratory Grown Diamond was created by Chemical Vapor Deposition (CVD) growth process. Type IIa



April 9, 2026 IGI Report No LG790650214 ROUND BRILLIANT 7.27 - 7.31 X 4.50 MM 1.49 CARAT E VVS 2 IDEAL 61.7% 58% Medium To Slightly Thick (Faceted) Pointed EXCELLENT EXCELLENT NONE IGI LG790650214 Comments: This Laboratory Grown Diamond was created by Chemical Vapor Deposition (CVD) growth process. Type IIa

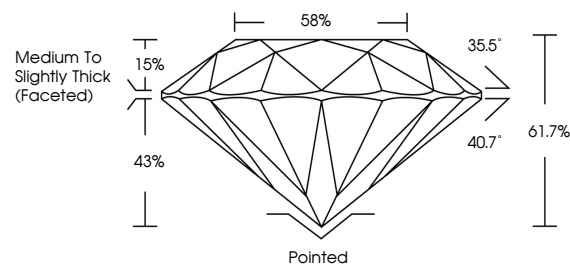
April 9, 2026 IGI Report Number LG790650214 Description LABORATORY GROWN DIAMOND Shape and Cutting Style ROUND BRILLIANT Measurements 7.27 - 7.31 X 4.50 MM

GRADING RESULTS Carat Weight 1.49 CARAT Color Grade E Clarity Grade VVS 2 Cut Grade IDEAL

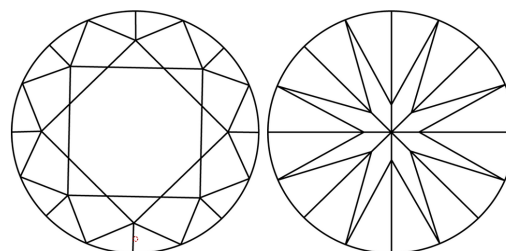
ADDITIONAL GRADING INFORMATION Polish EXCELLENT Symmetry EXCELLENT Fluorescence NONE Inscription(s) IGI LG790650214

Comments: This Laboratory Grown Diamond was created by Chemical Vapor Deposition (CVD) growth process. Type IIa

PROPORTIONS

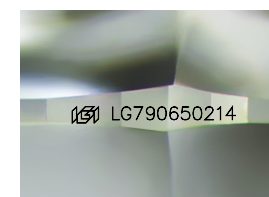


CLARITY CHARACTERISTICS



KEY TO SYMBOLS

Red symbols indicate internal characteristics. Green symbols indicate external characteristics.



Sample Image Used

COLOR

D E F G H I J Faint Very Light Light

CLARITY

FL IF VVS 1-2 VS 1-2 SI 1-2 I 1-3 Flawless Internally Flawless Very Very Slightly Included Very Slightly Included Slightly Included Included

