



ELECTRONIC COPY

LG790649312
Report verification at igi.org



April 17, 2026
IGI Report Number **LG790649312**
Description **LABORATORY GROWN DIAMOND**
Shape and Cutting Style **HEART BRILLIANT**
Measurements **6.51 X 7.05 X 4.18 MM**
GRADING RESULTS
Carat Weight **1.09 CARAT**
Color Grade **FANCY INTENSE PINK**
Clarity Grade **VVS 2**

LABORATORY GROWN DIAMOND REPORT

April 17, 2026
IGI Report Number **LG790649312**
Description **LABORATORY GROWN DIAMOND**
Shape and Cutting Style **HEART BRILLIANT**
Measurements **6.51 X 7.05 X 4.18 MM**

GRADING RESULTS

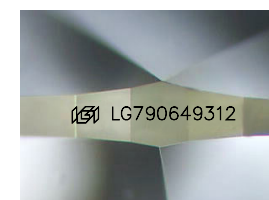
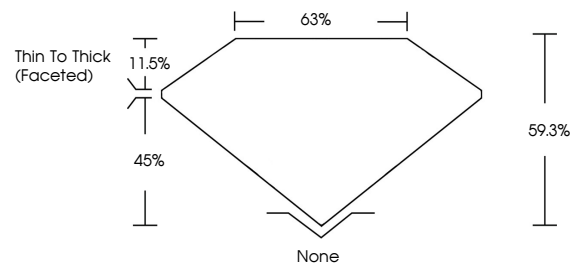
Carat Weight **1.09 CARAT**
Color Grade **FANCY INTENSE PINK**
Clarity Grade **VVS 2**

ADDITIONAL GRADING INFORMATION

Polish **VERY GOOD**
Symmetry **GOOD**
Fluorescence **STRONG**
Inscription(s) **IGI LG790649312**

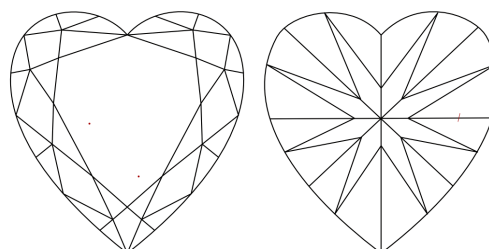
Comments: This Laboratory Grown Diamond was created by Chemical Vapor Deposition (CVD) growth process. Indications of post-growth treatment.

PROPORTIONS



Sample Image Used

CLARITY CHARACTERISTICS



KEY TO SYMBOLS

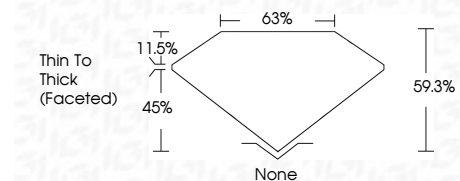
Red symbols indicate internal characteristics.
Green symbols indicate external characteristics.

COLOR

D E F G H I J Faint Very Light Light

CLARITY

FL	IF	VVS ¹⁻²	VS ¹⁻²	SI ¹⁻²	I ¹⁻³
Flawless	Internally Flawless	Very Very Slightly Included	Very Slightly Included	Slightly Included	Included



ADDITIONAL GRADING INFORMATION

Polish **VERY GOOD**
Symmetry **GOOD**
Fluorescence **STRONG**
Inscription(s) **IGI LG790649312**
Comments: This Laboratory Grown Diamond was created by Chemical Vapor Deposition (CVD) growth process. Indications of post-growth treatment.



April 17, 2026
IGI Report No LG790649312
HEART BRILLIANT
6.51 X 7.05 X 4.18 MM
1.09 CARAT
FANCY INTENSE PINK
VVS 2
63%
59.3%
Thin To Thick (Faceted)
None
VERY GOOD
GOOD
STRONG
IGI LG790649312
Comments: This Laboratory Grown Diamond was created by Chemical Vapor Deposition (CVD) growth process. Indications of post-growth treatment.