



ELECTRONIC COPY

LG790648941
Report verification at igi.org



April 21, 2026

IGI Report Number **LG790648941**

Description **LABORATORY GROWN DIAMOND**

Shape and Cutting Style **CUT CORNERED
RECTANGULAR MODIFIED
BRILLIANT**

Measurements **10.93 X 7.69 X 5.26 MM**

GRADING RESULTS

Carat Weight **4.07 CARATS**

Color Grade **FANCY INTENSE YELLOW**

Clarity Grade **VVS 2**

April 21, 2026
IGI Report Number **LG790648941**
Description **LABORATORY GROWN DIAMOND**
Shape and Cutting Style **CUT CORNERED RECTANGULAR
MODIFIED BRILLIANT**
Measurements **10.93 X 7.69 X 5.26 MM**

GRADING RESULTS

Carat Weight **4.07 CARATS**

Color Grade **FANCY INTENSE YELLOW**

Clarity Grade **VVS 2**

ADDITIONAL GRADING INFORMATION

Polish **VERY GOOD**

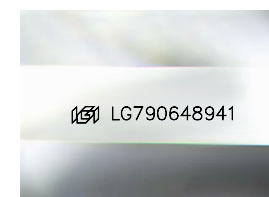
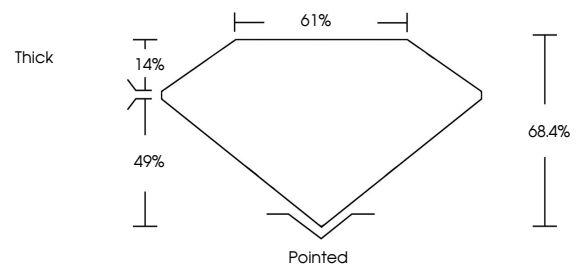
Symmetry **VERY GOOD**

Fluorescence **NONE**

Inscription(s) **IGI LG790648941**

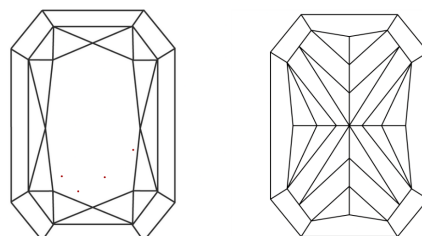
Comments: This Laboratory Grown Diamond was created by Chemical Vapor Deposition (CVD) growth process.

PROPORTIONS



Sample Image Used

CLARITY CHARACTERISTICS



KEY TO SYMBOLS

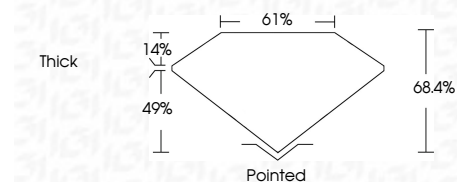
Red symbols indicate internal characteristics.
Green symbols indicate external characteristics.

COLOR

D E F G H I J Faint Very Light Light

CLARITY

FL	IF	VVS ¹⁻²	VS ¹⁻²	SI ¹⁻²	I ¹⁻³
Flawless	Internally Flawless	Very Very Slightly Included	Very Slightly Included	Slightly Included	Included



ADDITIONAL GRADING INFORMATION

Polish **VERY GOOD**

Symmetry **VERY GOOD**

Fluorescence **NONE**

Inscription(s) **IGI LG790648941**

Comments: This Laboratory Grown Diamond was created by Chemical Vapor Deposition (CVD) growth process.



April 21, 2026
IGI Report No LG790648941
CUT CORNERED RECT. MODIFIED BRILLIANT
10.93 X 7.69 X 5.26 MM
4.07 CARATS
FANCY INTENSE YELLOW
VVS 2
68.4%
61%
Thick
Pointed
Polish VERY GOOD
Symmetry VERY GOOD
Fluorescence NONE
Inscription(s) IGI LG790648941
Comments: This Laboratory Grown Diamond was created by Chemical Vapor Deposition (CVD) growth process.