



ELECTRONIC COPY

LG790648917
Report verification at igi.org



April 22, 2026

IGI Report Number **LG790648917**

Description **LABORATORY GROWN DIAMOND**

Shape and Cutting Style **CUT CORNERED
RECTANGULAR MODIFIED
BRILLIANT**

Measurements **7.78 X 5.57 X 4.16 MM**

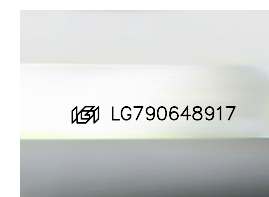
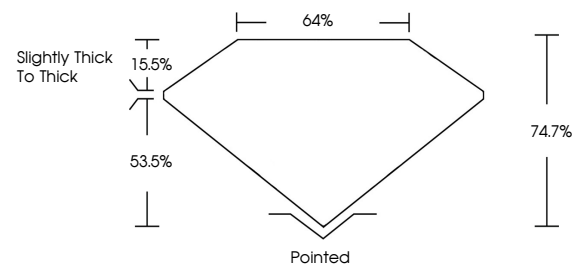
GRADING RESULTS

Carat Weight **1.71 CARAT**

Color Grade **FANCY YELLOW**

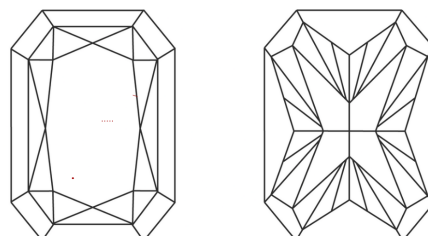
Clarity Grade **VVS 2**

PROPORTIONS



Sample Image Used

CLARITY CHARACTERISTICS



KEY TO SYMBOLS

Red symbols indicate internal characteristics.
Green symbols indicate external characteristics.

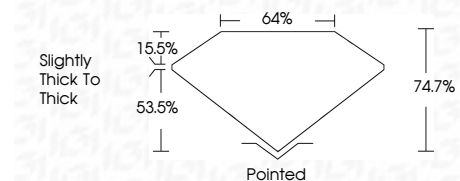
COLOR

D E F G H I J Faint Very Light Light

CLARITY

FL IF VVS¹⁻² VS¹⁻² SI¹⁻² I¹⁻³

Flawless Internally Flawless Very Very Slightly Included Very Slightly Included Slightly Included Included



ADDITIONAL GRADING INFORMATION

Polish **EXCELLENT**

Symmetry **EXCELLENT**

Fluorescence **NONE**

Inscription(s) **IGI LG790648917**

Comments: This Laboratory Grown Diamond was created by Chemical Vapor Deposition (CVD) growth process.

April 22, 2026

IGI Report Number **LG790648917**

Description **LABORATORY GROWN DIAMOND**

Shape and Cutting Style **CUT CORNERED RECTANGULAR
MODIFIED BRILLIANT**

Measurements **7.78 X 5.57 X 4.16 MM**

GRADING RESULTS

Carat Weight **1.71 CARAT**

Color Grade **FANCY YELLOW**

Clarity Grade **VVS 2**

ADDITIONAL GRADING INFORMATION

Polish **EXCELLENT**

Symmetry **EXCELLENT**

Fluorescence **NONE**

Inscription(s) **IGI LG790648917**

Comments: This Laboratory Grown Diamond was created by Chemical Vapor Deposition (CVD) growth process.



IGI

April 22, 2026
IGI Report No LG790648917
CUT CORNERED RECT. MODIFIED BRILLIANT
7.78 X 5.57 X 4.16 MM
Carat Weight 1.71 CARAT
Color Grade FANCY YELLOW
Clarity Grade VVS 2
Table 64%
Depth 74.7%
Girdle Slightly thick to thick
Culet Pointed
Polish EXCELLENT
Symmetry EXCELLENT
Fluorescence NONE
Inscription(s) IGI LG790648917
Comments: This Laboratory Grown Diamond was created by Chemical Vapor Deposition (CVD) growth process.