



**ELECTRONIC COPY**

LG790648546  
Report verification at [igi.org](http://igi.org)



April 20, 2026  
IGI Report Number **LG790648546**  
Description **LABORATORY GROWN DIAMOND**  
Shape and Cutting Style **CUSHION MODIFIED BRILLIANT**  
Measurements **13.58 X 8.91 X 6.05 MM**  
**GRADING RESULTS**  
Carat Weight **6.58 CARATS**  
Color Grade **F**  
Clarity Grade **FLAWLESS**

**LABORATORY GROWN DIAMOND REPORT**

April 20, 2026  
IGI Report Number **LG790648546**  
Description **LABORATORY GROWN DIAMOND**  
Shape and Cutting Style **CUSHION MODIFIED BRILLIANT**  
Measurements **13.58 X 8.91 X 6.05 MM**

**GRADING RESULTS**

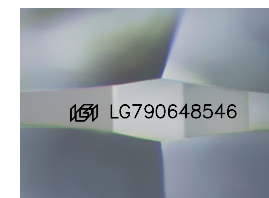
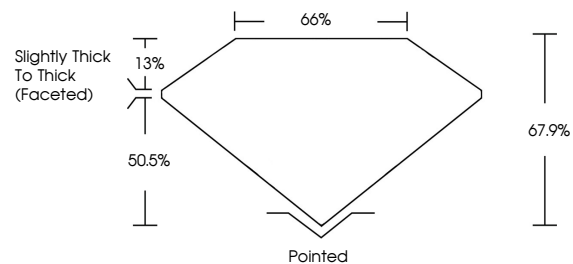
Carat Weight **6.58 CARATS**  
Color Grade **F**  
Clarity Grade **FLAWLESS**

**ADDITIONAL GRADING INFORMATION**

Polish **EXCELLENT**  
Symmetry **EXCELLENT**  
Fluorescence **NONE**  
Inscription(s) **IGI LG790648546**

Comments: This Laboratory Grown Diamond was created by Chemical Vapor Deposition (CVD) growth process. Type IIa

**PROPORTIONS**



Sample Image Used

**CLARITY CHARACTERISTICS**



**KEY TO SYMBOLS**

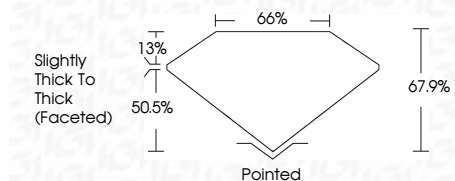
Red symbols indicate internal characteristics.  
Green symbols indicate external characteristics.

**COLOR**

D E F G H I J Faint Very Light Light

**CLARITY**

FL	IF	VS <sup>1-2</sup>	VS <sup>1-2</sup>	SI <sup>1-2</sup>	I <sup>1-3</sup>
Flawless	Internally Flawless	Very Very Slightly Included	Very Slightly Included	Slightly Included	Included



**ADDITIONAL GRADING INFORMATION**

Polish **EXCELLENT**  
Symmetry **EXCELLENT**  
Fluorescence **NONE**  
Inscription(s) **IGI LG790648546**  
Comments: This Laboratory Grown Diamond was created by Chemical Vapor Deposition (CVD) growth process. Type IIa



April 20, 2026  
IGI Report No **LG790648546**  
**CUSHION MODIFIED BRILLIANT**  
**6.58 CARATS**  
Carat Weight **F**  
Color Grade **FLAWLESS**  
Clarity Grade **FLAWLESS**  
Depth **67.9%**  
Table **66%**  
Girdle **Slightly Thick To Thick (Faceted)**  
Culet **Pointed**  
Polish **EXCELLENT**  
Symmetry **EXCELLENT**  
Fluorescence **NONE**  
Inscription(s) **IGI LG790648546**  
Comments: This Laboratory Grown Diamond was created by Chemical Vapor Deposition (CVD) growth process. Type IIa