



ELECTRONIC COPY

LG790648272
Report verification at igi.org



April 20, 2026

IGI Report Number **LG790648272**

Description **LABORATORY GROWN DIAMOND**

Shape and Cutting Style **MARQUISE BRILLIANT**

Measurements **14.25 X 7.60 X 4.34 MM**

GRADING RESULTS

Carat Weight **3.04 CARATS**

Color Grade **FANCY INTENSE PINK**

Clarity Grade **VVS 2**

April 20, 2026
IGI Report Number **LG790648272**
Description **LABORATORY GROWN DIAMOND**
Shape and Cutting Style **MARQUISE BRILLIANT**
Measurements **14.25 X 7.60 X 4.34 MM**

GRADING RESULTS

Carat Weight **3.04 CARATS**

Color Grade **FANCY INTENSE PINK**

Clarity Grade **VVS 2**

ADDITIONAL GRADING INFORMATION

Polish **EXCELLENT**

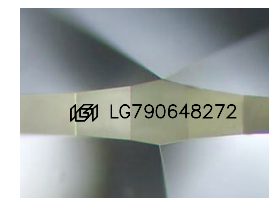
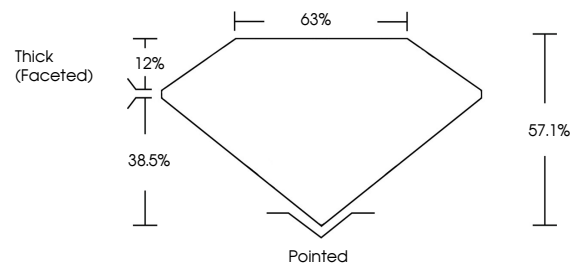
Symmetry **EXCELLENT**

Fluorescence **SLIGHT**

Inscription(s) **IGI LG790648272**

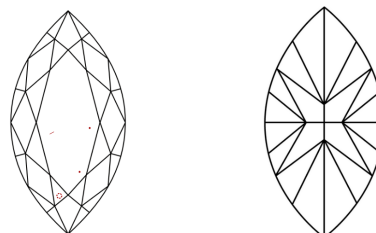
Comments: This Laboratory Grown Diamond was created by Chemical Vapor Deposition (CVD) growth process.
Indications of post-growth treatment.

PROPORTIONS



Sample Image Used

CLARITY CHARACTERISTICS



KEY TO SYMBOLS

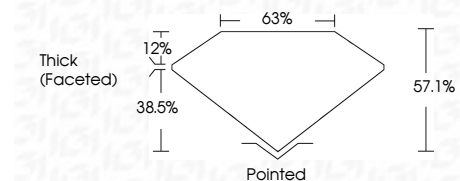
Red symbols indicate internal characteristics.
Green symbols indicate external characteristics.

COLOR

D E F G H I J Faint Very Light Light

CLARITY

FL	IF	VVS ¹⁻²	VS ¹⁻²	SI ¹⁻²	I ¹⁻³
Flawless	Internally Flawless	Very Very Slightly Included	Very Slightly Included	Slightly Included	Included



ADDITIONAL GRADING INFORMATION

Polish **EXCELLENT**

Symmetry **EXCELLENT**

Fluorescence **SLIGHT**

Inscription(s) **IGI LG790648272**

Comments: This Laboratory Grown Diamond was created by Chemical Vapor Deposition (CVD) growth process.
Indications of post-growth treatment.



April 20, 2026
IGI Report No LG790648272
MARQUISE BRILLIANT

3.04 CARATS
FANCY INTENSE PINK

VVS 2
57.1%
63%

Thick (Faceted)
Pointed
EXCELLENT
EXCELLENT
SLIGHT
IGI LG790648272

Comments: This Laboratory Grown Diamond was created by Chemical Vapor Deposition (CVD) growth process.
Indications of post-growth treatment.