



ELECTRONIC COPY

LG790648261
Report verification at igi.org



April 20, 2026
IGI Report Number **LG790648261**
Description **LABORATORY GROWN DIAMOND**
Shape and Cutting Style **CUSHION MODIFIED BRILLIANT**
Measurements **8.96 X 8.37 X 5.74 MM**
GRADING RESULTS
Carat Weight **4.01 CARATS**
Color Grade **FANCY VIVID BLUE**
Clarity Grade **VVS 2**

LABORATORY GROWN DIAMOND REPORT

April 20, 2026
IGI Report Number **LG790648261**
Description **LABORATORY GROWN DIAMOND**
Shape and Cutting Style **CUSHION MODIFIED BRILLIANT**
Measurements **8.96 X 8.37 X 5.74 MM**

GRADING RESULTS

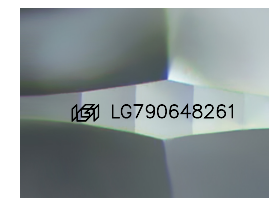
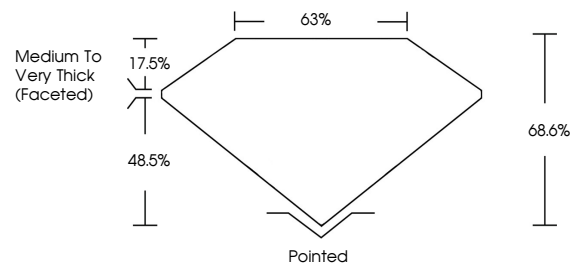
Carat Weight **4.01 CARATS**
Color Grade **FANCY VIVID BLUE**
Clarity Grade **VVS 2**

ADDITIONAL GRADING INFORMATION

Polish **EXCELLENT**
Symmetry **EXCELLENT**
Fluorescence **NONE**
Inscription(s) **IGI LG790648261**

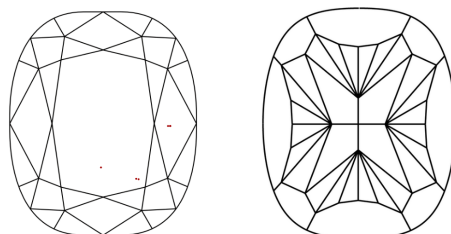
Comments: This Laboratory Grown Diamond was created by Chemical Vapor Deposition (CVD) growth process.
Indications of post-growth treatment.

PROPORTIONS



Sample Image Used

CLARITY CHARACTERISTICS



KEY TO SYMBOLS

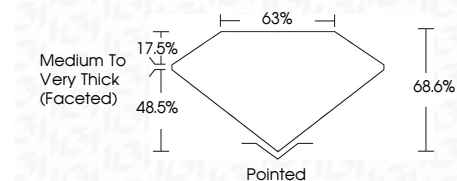
Red symbols indicate internal characteristics.
Green symbols indicate external characteristics.

COLOR

D E F G H I J Faint Very Light Light

CLARITY

FL	IF	VVS ¹⁻²	VS ¹⁻²	SI ¹⁻²	I ¹⁻³
Flawless	Internally Flawless	Very Very Slightly Included	Very Slightly Included	Slightly Included	Included



ADDITIONAL GRADING INFORMATION

Polish **EXCELLENT**
Symmetry **EXCELLENT**
Fluorescence **NONE**
Inscription(s) **IGI LG790648261**
Comments: This Laboratory Grown Diamond was created by Chemical Vapor Deposition (CVD) growth process.
Indications of post-growth treatment.



April 20, 2026
IGI Report No LG790648261
CUSHION MODIFIED BRILLIANT
4.01 CARATS
FANCY VIVID BLUE
VVS 2
8.96 X 8.37 X 5.74 MM
68.6%
48.5%
63%
Medium to Very Thick (Faceted)
Pointed
EXCELLENT
EXCELLENT
NONE
IGI LG790648261
Comments: This Laboratory Grown Diamond was created by Chemical Vapor Deposition (CVD) growth process.
Indications of post-growth treatment.