



ELECTRONIC COPY

LG790648215
Report verification at igi.org



April 21, 2026

IGI Report Number **LG790648215**

Description **LABORATORY GROWN DIAMOND**

Shape and Cutting Style **CUT CORNERED
RECTANGULAR MODIFIED
BRILLIANT**

Measurements **6.82 X 4.82 X 3.36 MM**

GRADING RESULTS

Carat Weight **1.01 CARAT**

Color Grade **FANCY YELLOW**

Clarity Grade **VS 1**

LABORATORY GROWN DIAMOND REPORT

April 21, 2026

IGI Report Number **LG790648215**

Description **LABORATORY GROWN DIAMOND**

Shape and Cutting Style **CUT CORNERED RECTANGULAR
MODIFIED BRILLIANT**

Measurements **6.82 X 4.82 X 3.36 MM**

GRADING RESULTS

Carat Weight **1.01 CARAT**

Color Grade **FANCY YELLOW**

Clarity Grade **VS 1**

ADDITIONAL GRADING INFORMATION

Polish **EXCELLENT**

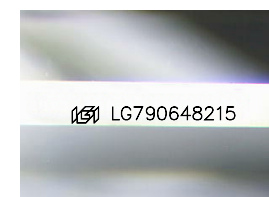
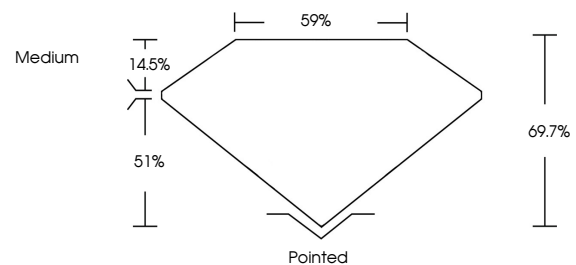
Symmetry **EXCELLENT**

Fluorescence **NONE**

Inscription(s) **IGI LG790648215**

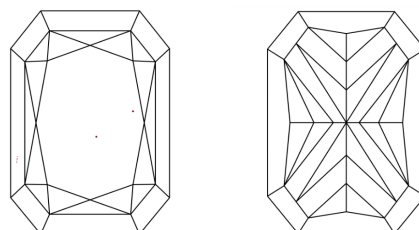
Comments: This Laboratory Grown Diamond was created by Chemical Vapor Deposition (CVD) growth process.

PROPORTIONS



Sample Image Used

CLARITY CHARACTERISTICS



KEY TO SYMBOLS

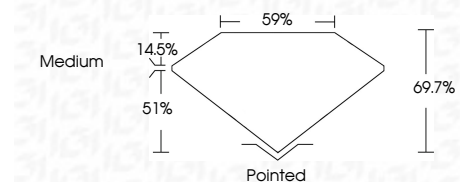
Red symbols indicate internal characteristics.
Green symbols indicate external characteristics.

COLOR

D E F G H I J Faint Very Light Light

CLARITY

FL	IF	VS ¹⁻²	VS ¹⁻²	SI ¹⁻²	I ¹⁻³
Flawless	Internally Flawless	Very Very Slightly Included	Very Slightly Included	Slightly Included	Included



ADDITIONAL GRADING INFORMATION

Polish **EXCELLENT**

Symmetry **EXCELLENT**

Fluorescence **NONE**

Inscription(s) **IGI LG790648215**

Comments: This Laboratory Grown Diamond was created by Chemical Vapor Deposition (CVD) growth process.



April 21, 2026
IGI Report No LG790648215
CUT CORNERED RECT. MODIFIED BRILLIANT
6.82 X 4.82 X 3.36 MM
Carat Weight 1.01 CARAT
Color Grade FANCY YELLOW
Clarity Grade VS 1
Depth 51%
Table 14.5%
Girdle Medium
Culet Pointed
Polish EXCELLENT
Symmetry EXCELLENT
Fluorescence NONE
Inscription(s) IGI LG790648215

Comments: This Laboratory Grown Diamond was created by Chemical Vapor Deposition (CVD) growth process.