



ELECTRONIC COPY

LG790648154
Report verification at igi.org



April 22, 2026
IGI Report Number **LG790648154**
Description **LABORATORY GROWN DIAMOND**
Shape and Cutting Style **OVAL BRILLIANT**
Measurements **7.99 X 5.60 X 3.42 MM**
GRADING RESULTS
Carat Weight **1.01 CARAT**
Color Grade **FANCY VIVID PINK**
Clarity Grade **VVS 2**

April 22, 2026
IGI Report Number **LG790648154**
Description **LABORATORY GROWN DIAMOND**
Shape and Cutting Style **OVAL BRILLIANT**
Measurements **7.99 X 5.60 X 3.42 MM**

GRADING RESULTS

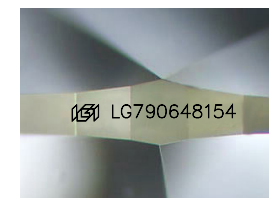
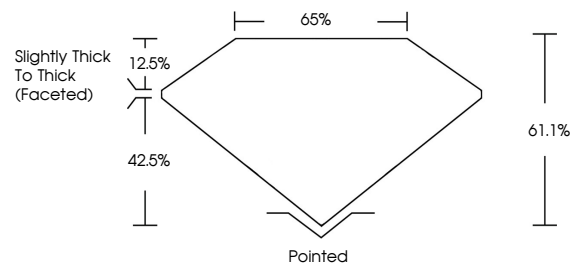
Carat Weight **1.01 CARAT**
Color Grade **FANCY VIVID PINK**
Clarity Grade **VVS 2**

ADDITIONAL GRADING INFORMATION

Polish **EXCELLENT**
Symmetry **EXCELLENT**
Fluorescence **SLIGHT**
Inscription(s) **IGI LG790648154**

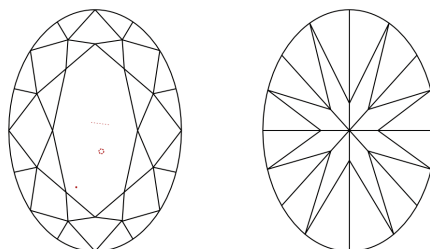
Comments: This Laboratory Grown Diamond was created by Chemical Vapor Deposition (CVD) growth process.
Indications of post-growth treatment.

PROPORTIONS



Sample Image Used

CLARITY CHARACTERISTICS



KEY TO SYMBOLS

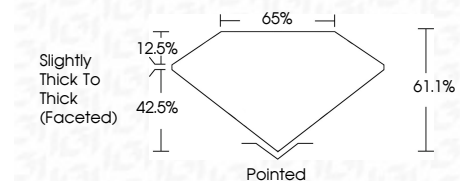
Red symbols indicate internal characteristics.
Green symbols indicate external characteristics.

COLOR

D E F G H I J Faint Very Light Light

CLARITY

FL	IF	VVS ¹⁻²	VS ¹⁻²	SI ¹⁻²	I ¹⁻³
Flawless	Internally Flawless	Very Very Slightly Included	Very Slightly Included	Slightly Included	Included



ADDITIONAL GRADING INFORMATION

Polish **EXCELLENT**
Symmetry **EXCELLENT**
Fluorescence **SLIGHT**
Inscription(s) **IGI LG790648154**
Comments: This Laboratory Grown Diamond was created by Chemical Vapor Deposition (CVD) growth process.
Indications of post-growth treatment.



April 22, 2026
IGI Report No LG790648154
OVAL BRILLIANT
1.01 CARAT
FANCY VIVID PINK
VVS 2
7.99 X 5.60 X 3.42 MM
Color Grade
Clarity Grade
Depth
Table
Girdle
Slightly Thick To Thick (Faceted)
61.1%
65%
Pointed
EXCELLENT
EXCELLENT
SLIGHT
IGI LG790648154
Comments: This Laboratory Grown Diamond was created by Chemical Vapor Deposition (CVD) growth process.
Indications of post-growth treatment.