



ELECTRONIC COPY

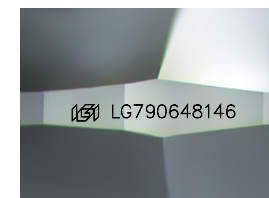
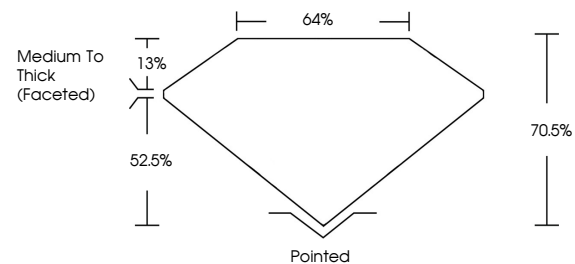
LG790648146
Report verification at igi.org



April 22, 2026
IGI Report Number **LG790648146**
Description **LABORATORY GROWN DIAMOND**
Shape and Cutting Style **CUSHION MODIFIED BRILLIANT**
Measurements **6.78 X 5.01 X 3.53 MM**
GRADING RESULTS
Carat Weight **1.00 CARAT**
Color Grade **FANCY VIVID PINK**
Clarity Grade **VS 1**

April 22, 2026
IGI Report Number **LG790648146**
Description **LABORATORY GROWN DIAMOND**
Shape and Cutting Style **CUSHION MODIFIED BRILLIANT**
Measurements **6.78 X 5.01 X 3.53 MM**

PROPORTIONS

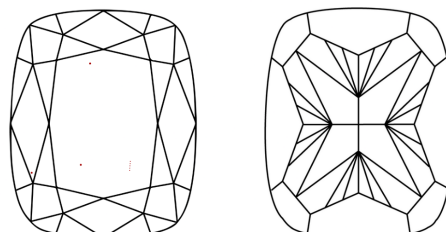


Sample Image Used

GRADING RESULTS

Carat Weight **1.00 CARAT**
Color Grade **FANCY VIVID PINK**
Clarity Grade **VS 1**

CLARITY CHARACTERISTICS



KEY TO SYMBOLS

Red symbols indicate internal characteristics.
Green symbols indicate external characteristics.

ADDITIONAL GRADING INFORMATION

Polish **EXCELLENT**
Symmetry **EXCELLENT**
Fluorescence **SLIGHT**
Inscription(s) **IGI LG790648146**

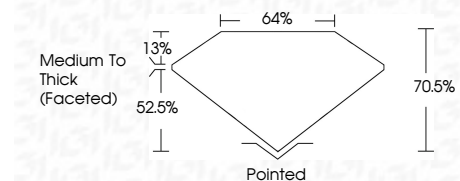
Comments: This Laboratory Grown Diamond was created by Chemical Vapor Deposition (CVD) growth process.
Indications of post-growth treatment.

COLOR

D E F G H I J Faint Very Light Light

CLARITY

| FL | IF | VS ¹⁻² | VS ¹⁻² | SI ¹⁻² | I ¹⁻³ |
|----------|---------------------|-----------------------------|------------------------|-------------------|------------------|
| Flawless | Internally Flawless | Very Very Slightly Included | Very Slightly Included | Slightly Included | Included |



ADDITIONAL GRADING INFORMATION

Polish **EXCELLENT**
Symmetry **EXCELLENT**
Fluorescence **SLIGHT**
Inscription(s) **IGI LG790648146**
Comments: This Laboratory Grown Diamond was created by Chemical Vapor Deposition (CVD) growth process.
Indications of post-growth treatment.



April 22, 2026
IGI Report No LG790648146
CUSHION MODIFIED BRILLIANT
6.78 X 5.01 X 3.53 MM
1.00 CARAT
FANCY VIVID PINK
VS 1
70.5%
64%
Medium To Thick (Faceted)
Pointed
EXCELLENT
EXCELLENT
SLIGHT
IGI LG790648146
Comments: This Laboratory Grown Diamond was created by Chemical Vapor Deposition (CVD) growth process.
Indications of post-growth treatment.