



ELECTRONIC COPY

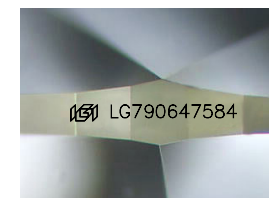
LG790647584
Report verification at igi.org



April 17, 2026
IGI Report Number **LG790647584**
Description **LABORATORY GROWN DIAMOND**

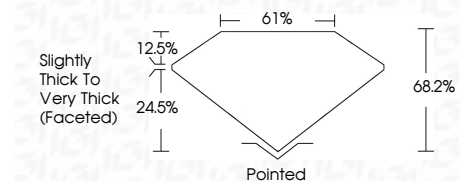
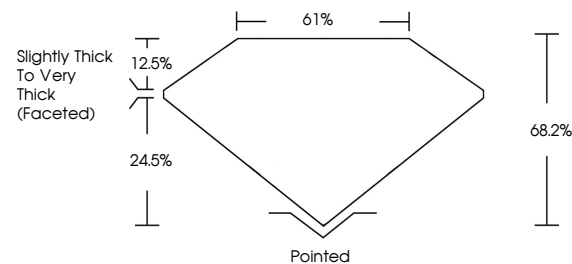
Shape and Cutting Style **PEAR MODIFIED BRILLIANT**
Measurements **9.58 X 6.06 X 4.13 MM**

GRADING RESULTS
Carat Weight **1.70 CARAT**
Color Grade **FANCY INTENSE YELLOW**
Clarity Grade **VVS 2**

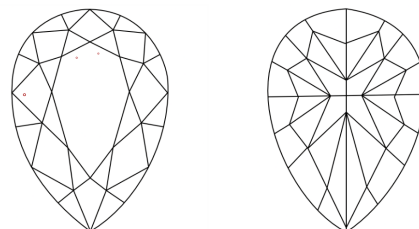


Sample Image Used

PROPORTIONS



CLARITY CHARACTERISTICS



KEY TO SYMBOLS

Red symbols indicate internal characteristics.
Green symbols indicate external characteristics.

COLOR

D E F G H I J Faint Very Light Light

CLARITY

FL	IF	VVS ¹⁻²	VS ¹⁻²	SI ¹⁻²	I ¹⁻³
Flawless	Internally Flawless	Very Very Slightly Included	Very Slightly Included	Slightly Included	Included

ADDITIONAL GRADING INFORMATION

Polish **EXCELLENT**
Symmetry **VERY GOOD**
Fluorescence **NONE**
Inscription(s) **IGI LG790647584**
Comments: This Laboratory Grown Diamond was created by Chemical Vapor Deposition (CVD) growth process.



April 17, 2026
IGI Report No LG790647584
PEAR MODIFIED BRILLIANT
9.58 X 6.06 X 4.13 MM
1.70 CARAT
Color Grade **FANCY INTENSE YELLOW**
Clarity Grade **VVS 2**
Depth **68.2%**
Table **61%**
Girdle **Slightly Thick To Very Thick (Faceted)**
Culet **Pointed**
Polish **EXCELLENT**
Symmetry **VERY GOOD**
Fluorescence **NONE**
Inscription(s) **IGI LG790647584**
Comments: This Laboratory Grown Diamond was created by Chemical Vapor Deposition (CVD) growth process.