



ELECTRONIC COPY

LG790647578
Report verification at igi.org



April 17, 2026
IGI Report Number **LG790647578**

Description **LABORATORY GROWN DIAMOND**

Shape and Cutting Style **CUT CORNERED
RECTANGULAR MODIFIED
BRILLIANT**

Measurements **6.68 X 4.86 X 3.33 MM**

GRADING RESULTS

Carat Weight **1.05 CARAT**

Color Grade **FANCY INTENSE YELLOW**

Clarity Grade **VVS 2**

LABORATORY GROWN DIAMOND REPORT

April 17, 2026

IGI Report Number **LG790647578**

Description **LABORATORY GROWN DIAMOND**

Shape and Cutting Style **CUT CORNERED RECTANGULAR
MODIFIED BRILLIANT**

Measurements **6.68 X 4.86 X 3.33 MM**

GRADING RESULTS

Carat Weight **1.05 CARAT**

Color Grade **FANCY INTENSE YELLOW**

Clarity Grade **VVS 2**

ADDITIONAL GRADING INFORMATION

Polish **EXCELLENT**

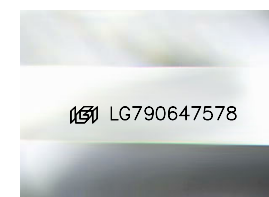
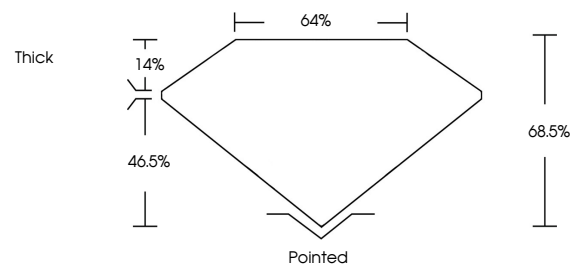
Symmetry **EXCELLENT**

Fluorescence **NONE**

Inscription(s) **IGI LG790647578**

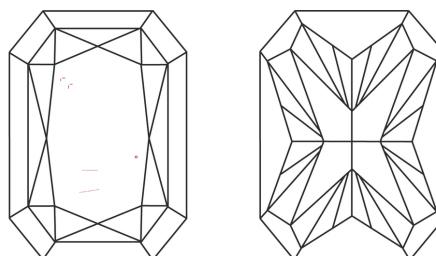
Comments: This Laboratory Grown Diamond was created by Chemical Vapor Deposition (CVD) growth process.

PROPORTIONS



Sample Image Used

CLARITY CHARACTERISTICS



KEY TO SYMBOLS

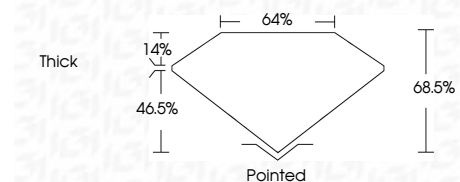
Red symbols indicate internal characteristics.
Green symbols indicate external characteristics.

COLOR

D E F G H I J Faint Very Light Light

CLARITY

FL	IF	VVS ¹⁻²	VS ¹⁻²	SI ¹⁻²	I ¹⁻³
Flawless	Internally Flawless	Very Very Slightly Included	Very Slightly Included	Slightly Included	Included



ADDITIONAL GRADING INFORMATION

Polish **EXCELLENT**

Symmetry **EXCELLENT**

Fluorescence **NONE**

Inscription(s) **IGI LG790647578**

Comments: This Laboratory Grown Diamond was created by Chemical Vapor Deposition (CVD) growth process.



IGI



April 17, 2026
IGI Report No LG790647578
CUT CORNERED RECT. MODIFIED BRILLIANT
6.68 X 4.86 X 3.33 MM
Carat Weight 1.05 CARAT
Color Grade FANCY INTENSE YELLOW
Clarity Grade VVS 2
Depth 68.5%
Table 46%
Girdle Thick
Culet Pointed
Polish EXCELLENT
Symmetry EXCELLENT
Fluorescence NONE
Inscription(s) IGI LG790647578
Comments: This Laboratory Grown Diamond was created by Chemical Vapor Deposition (CVD) growth process.