



ELECTRONIC COPY

LG790646975
Report verification at igi.org



April 16, 2026

IGI Report Number **LG790646975**

Description **LABORATORY GROWN DIAMOND**

Shape and Cutting Style **ROUND BRILLIANT**

Measurements **8.77 - 8.81 X 5.43 MM**

GRADING RESULTS

Carat Weight **2.58 CARATS**

Color Grade **FANCY YELLOW**

Clarity Grade **VVS 2**

Cut Grade **IDEAL**

April 16, 2026

IGI Report Number **LG790646975**

Description **LABORATORY GROWN DIAMOND**

Shape and Cutting Style **ROUND BRILLIANT**

Measurements **8.77 - 8.81 X 5.43 MM**

GRADING RESULTS

Carat Weight **2.58 CARATS**

Color Grade **FANCY YELLOW**

Clarity Grade **VVS 2**

Cut Grade **IDEAL**

ADDITIONAL GRADING INFORMATION

Polish **EXCELLENT**

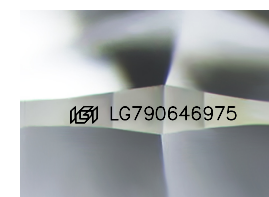
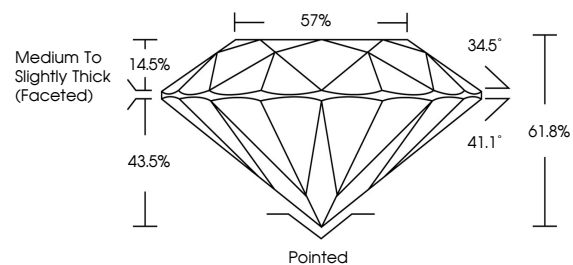
Symmetry **EXCELLENT**

Fluorescence **NONE**

Inscription(s) **IGI LG790646975**

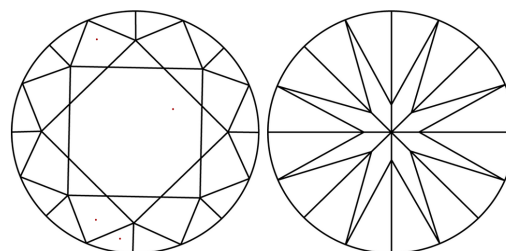
Comments: This Laboratory Grown Diamond was created by Chemical Vapor Deposition (CVD) growth process.

PROPORTIONS



Sample Image Used

CLARITY CHARACTERISTICS



KEY TO SYMBOLS

Red symbols indicate internal characteristics.
Green symbols indicate external characteristics.

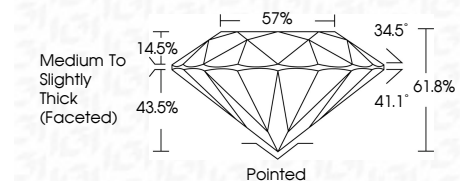
COLOR

D E F G H I J Faint Very Light Light

CLARITY

FL IF VVS¹⁻² VS¹⁻² SI¹⁻² I¹⁻³

Flawless Internally Flawless Very Very Slightly Included Very Slightly Included Slightly Included Included



ADDITIONAL GRADING INFORMATION

Polish **EXCELLENT**

Symmetry **EXCELLENT**

Fluorescence **NONE**

Inscription(s) **IGI LG790646975**

Comments: This Laboratory Grown Diamond was created by Chemical Vapor Deposition (CVD) growth process.



April 16, 2026
IGI Report No LG790646975
ROUND BRILLIANT
8.77 - 8.81 X 5.43 MM
2.58 CARATS
FANCY YELLOW
VVS 2
IDEAL
61.8%
57%
Medium To Slightly Thick (Faceted)
Pointed
EXCELLENT
EXCELLENT
NONE
IGI LG790646975
Comments: This Laboratory Grown Diamond was created by Chemical Vapor Deposition (CVD) growth process.