



ELECTRONIC COPY

LG790646908
Report verification at igi.org



April 16, 2026
IGI Report Number **LG790646908**
Description **LABORATORY GROWN DIAMOND**
Shape and Cutting Style **SQUARE CUSHION MODIFIED BRILLIANT**
Measurements **7.84 X 7.84 X 5.15 MM**
GRADING RESULTS
Carat Weight **3.08 CARATS**
Color Grade **FANCY INTENSE YELLOW**
Clarity Grade **VS 2**

April 16, 2026
IGI Report Number **LG790646908**
Description **LABORATORY GROWN DIAMOND**
Shape and Cutting Style **SQUARE CUSHION MODIFIED BRILLIANT**
Measurements **7.84 X 7.84 X 5.15 MM**

GRADING RESULTS

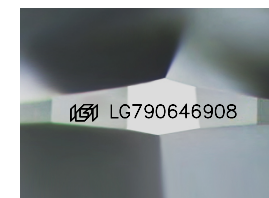
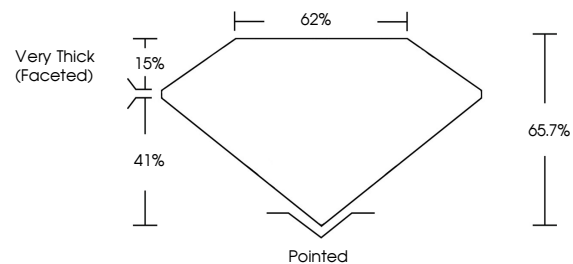
Carat Weight **3.08 CARATS**
Color Grade **FANCY INTENSE YELLOW**
Clarity Grade **VS 2**

ADDITIONAL GRADING INFORMATION

Polish **EXCELLENT**
Symmetry **EXCELLENT**
Fluorescence **NONE**
Inscription(s) **IGI LG790646908**

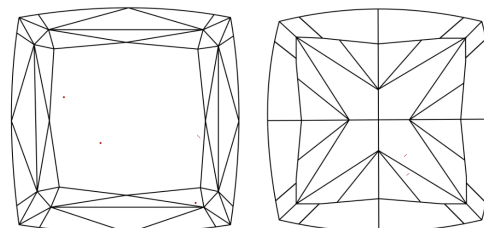
Comments: This Laboratory Grown Diamond was created by Chemical Vapor Deposition (CVD) growth process.

PROPORTIONS



Sample Image Used

CLARITY CHARACTERISTICS



KEY TO SYMBOLS

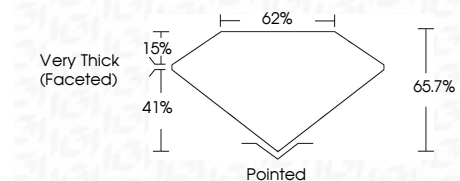
Red symbols indicate internal characteristics.
Green symbols indicate external characteristics.

COLOR

D E F G H I J Faint Very Light Light

CLARITY

FL	IF	VS ¹⁻²	VS ¹⁻²	SI ¹⁻²	I ¹⁻³
Flawless	Internally Flawless	Very Very Slightly Included	Very Slightly Included	Slightly Included	Included



ADDITIONAL GRADING INFORMATION

Polish **EXCELLENT**
Symmetry **EXCELLENT**
Fluorescence **NONE**
Inscription(s) **IGI LG790646908**
Comments: This Laboratory Grown Diamond was created by Chemical Vapor Deposition (CVD) growth process.



April 16, 2026
IGI Report No **LG790646908**
SQUARE CUSHION MODIFIED BRILLIANT
7.84 X 7.84 X 5.15 MM
3.08 CARATS
FANCY INTENSE YELLOW
VS 2
65.7%
62%
Very Thick (Faceted)
Pointed
EXCELLENT
EXCELLENT
NONE
IGI LG790646908
Comments: This Laboratory Grown Diamond was created by Chemical Vapor Deposition (CVD) growth process.