



ELECTRONIC COPY

LG790646190
Report verification at igi.org



April 24, 2026

IGI Report Number **LG790646190**

Description **LABORATORY GROWN DIAMOND**

Shape and Cutting Style **CUT CORNERED
RECTANGULAR MODIFIED
BRILLIANT**

Measurements **10.95 X 7.47 X 5.22 MM**

GRADING RESULTS

Carat Weight **4.09 CARATS**

Color Grade **FANCY VIVID RED**

Clarity Grade **VVS 2**

April 24, 2026
IGI Report Number **LG790646190**
Description **LABORATORY GROWN DIAMOND**
Shape and Cutting Style **CUT CORNERED RECTANGULAR
MODIFIED BRILLIANT**
Measurements **10.95 X 7.47 X 5.22 MM**

GRADING RESULTS

Carat Weight **4.09 CARATS**

Color Grade **FANCY VIVID RED**

Clarity Grade **VVS 2**

ADDITIONAL GRADING INFORMATION

Polish **EXCELLENT**

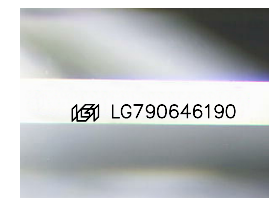
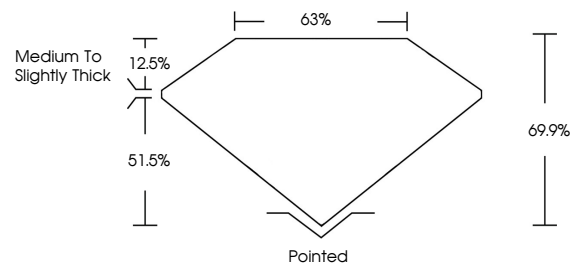
Symmetry **EXCELLENT**

Fluorescence **SLIGHT**

Inscription(s) **IGI LG790646190**

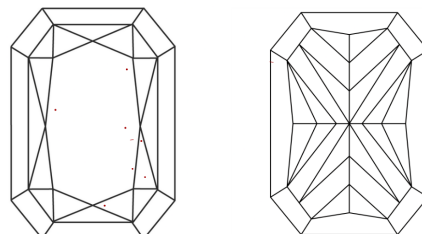
Comments: This Laboratory Grown Diamond was created by Chemical Vapor Deposition (CVD) growth process. Indications of post-growth treatment.

PROPORTIONS



Sample Image Used

CLARITY CHARACTERISTICS



KEY TO SYMBOLS

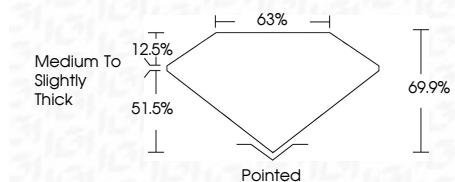
Red symbols indicate internal characteristics.
Green symbols indicate external characteristics.

COLOR

D E F G H I J Faint Very Light Light

CLARITY

FL	IF	VVS ¹⁻²	VS ¹⁻²	SI ¹⁻²	I ¹⁻³
Flawless	Internally Flawless	Very Very Slightly Included	Very Slightly Included	Slightly Included	Included



ADDITIONAL GRADING INFORMATION

Polish **EXCELLENT**

Symmetry **EXCELLENT**

Fluorescence **SLIGHT**

Inscription(s) **IGI LG790646190**

Comments: This Laboratory Grown Diamond was created by Chemical Vapor Deposition (CVD) growth process. Indications of post-growth treatment.



IGI



April 24, 2026
IGI Report No LG790646190
CUT CORNERED RECT. MODIFIED BRILLIANT
4.09 CARATS
FANCY VIVID RED
VVS 2
69.9%
63%
Medium to Slightly Thick
Pointed
EXCELLENT
EXCELLENT
SLIGHT
IGI LG790646190

Comments: This Laboratory Grown Diamond was created by Chemical Vapor Deposition (CVD) growth process. Indications of post-growth treatment.