



ELECTRONIC COPY

LG790646146
Report verification at igi.org



April 13, 2026
IGI Report Number **LG790646146**
Description **LABORATORY GROWN DIAMOND**
Shape and Cutting Style **CUSHION MODIFIED BRILLIANT**
Measurements **6.92 X 5.10 X 3.23 MM**
GRADING RESULTS
Carat Weight **1.08 CARAT**
Color Grade **FANCY YELLOW**
Clarity Grade **VVS 2**

April 13, 2026
IGI Report Number **LG790646146**
Description **LABORATORY GROWN DIAMOND**
Shape and Cutting Style **CUSHION MODIFIED BRILLIANT**
Measurements **6.92 X 5.10 X 3.23 MM**

GRADING RESULTS

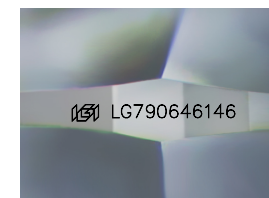
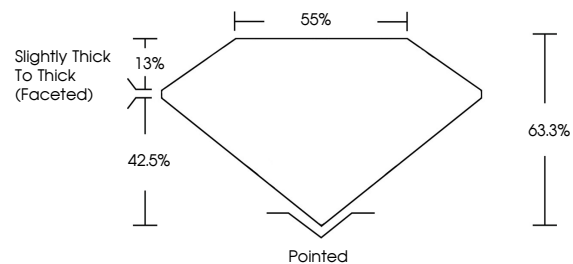
Carat Weight **1.08 CARAT**
Color Grade **FANCY YELLOW**
Clarity Grade **VVS 2**

ADDITIONAL GRADING INFORMATION

Polish **EXCELLENT**
Symmetry **EXCELLENT**
Fluorescence **NONE**
Inscription(s) **IGI LG790646146**

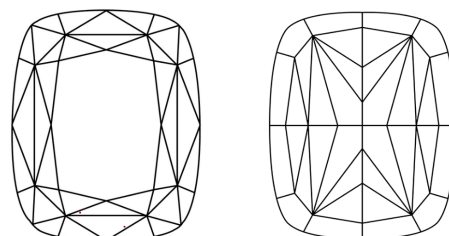
Comments: This Laboratory Grown Diamond was created by Chemical Vapor Deposition (CVD) growth process.

PROPORTIONS



Sample Image Used

CLARITY CHARACTERISTICS



KEY TO SYMBOLS

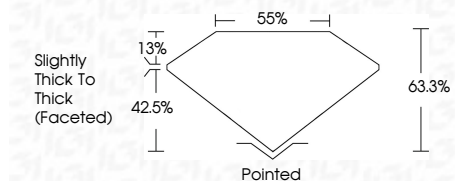
Red symbols indicate internal characteristics.
Green symbols indicate external characteristics.

COLOR

D E F G H I J Faint Very Light Light

CLARITY

FL	IF	VVS ¹⁻²	VS ¹⁻²	SI ¹⁻²	I ¹⁻³
Flawless	Internally Flawless	Very Very Slightly Included	Very Slightly Included	Slightly Included	Included



ADDITIONAL GRADING INFORMATION

Polish **EXCELLENT**
Symmetry **EXCELLENT**
Fluorescence **NONE**
Inscription(s) **IGI LG790646146**
Comments: This Laboratory Grown Diamond was created by Chemical Vapor Deposition (CVD) growth process.



April 13, 2026
IGI Report No LG790646146
CUSHION MODIFIED BRILLIANT
6.92 X 5.10 X 3.23 MM
1.08 CARAT
FANCY YELLOW
VVS 2
63.3%
85%
Slightly Thick To Thick (Faceted)
Pointed
EXCELLENT
EXCELLENT
NONE
IGI LG790646146
Comments: This Laboratory Grown Diamond was created by Chemical Vapor Deposition (CVD) growth process.