



ELECTRONIC COPY

LG790645810
Report verification at igi.org



April 13, 2026
IGI Report Number LG790645810
Description LABORATORY GROWN DIAMOND
Shape and Cutting Style CUT CORNERED RECTANGULAR MODIFIED BRILLIANT
Measurements 7.22 X 4.96 X 3.39 MM
GRADING RESULTS
Carat Weight 1.09 CARAT
Color Grade FANCY VIVID PINK
Clarity Grade VS 1

April 13, 2026
IGI Report Number LG790645810
Description LABORATORY GROWN DIAMOND
Shape and Cutting Style CUT CORNERED RECTANGULAR MODIFIED BRILLIANT
Measurements 7.22 X 4.96 X 3.39 MM

GRADING RESULTS

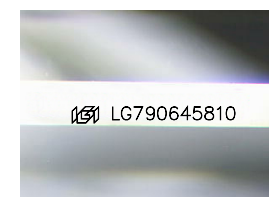
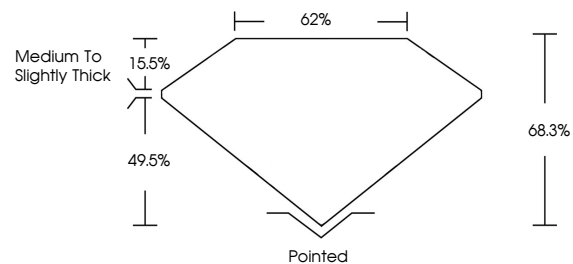
Carat Weight 1.09 CARAT
Color Grade FANCY VIVID PINK
Clarity Grade VS 1

ADDITIONAL GRADING INFORMATION

Polish EXCELLENT
Symmetry EXCELLENT
Fluorescence SLIGHT
Inscription(s) LG790645810

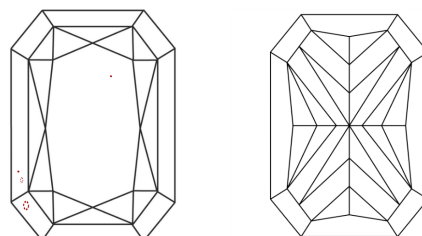
Comments: This Laboratory Grown Diamond was created by Chemical Vapor Deposition (CVD) growth process.
Indications of post-growth treatment.

PROPORTIONS



Sample Image Used

CLARITY CHARACTERISTICS



KEY TO SYMBOLS

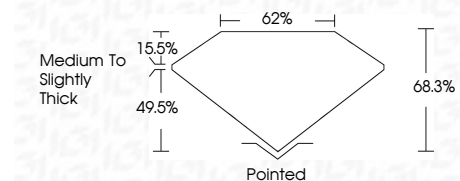
Red symbols indicate internal characteristics.
Green symbols indicate external characteristics.

COLOR

D E F G H I J Faint Very Light Light

CLARITY

FL IF VS 1-2 VS 1-2 SI 1-2 I 1-3
Flawless Internally Flawless Very Very Slightly Included Very Slightly Included Slightly Included Included



ADDITIONAL GRADING INFORMATION

Polish EXCELLENT
Symmetry EXCELLENT
Fluorescence SLIGHT
Inscription(s) LG790645810
Comments: This Laboratory Grown Diamond was created by Chemical Vapor Deposition (CVD) growth process.
Indications of post-growth treatment.



April 13, 2026
IGI Report No LG790645810
CUT CORNERED RECT. MODIFIED BRILLIANT
1.09 CARAT
FANCY VIVID PINK
VS 1
68.3%
62%
Medium to Slightly Thick
Pointed
EXCELLENT
EXCELLENT
SLIGHT
LG790645810
Comments: This Laboratory Grown Diamond was created by Chemical Vapor Deposition (CVD) growth process.
Indications of post-growth treatment.