



**ELECTRONIC COPY**

LG790645761  
Report verification at igi.org



April 13, 2026  
IGI Report Number **LG790645761**  
Description **LABORATORY GROWN DIAMOND**  
Shape and Cutting Style **MARQUISE BRILLIANT**  
Measurements **10.62 X 5.23 X 3.32 MM**  
**GRADING RESULTS**  
Carat Weight **1.05 CARAT**  
Color Grade **FANCY VIVID GREEN**  
Clarity Grade **VVS 2**

**LABORATORY GROWN DIAMOND REPORT**

April 13, 2026  
IGI Report Number **LG790645761**  
Description **LABORATORY GROWN DIAMOND**  
Shape and Cutting Style **MARQUISE BRILLIANT**  
Measurements **10.62 X 5.23 X 3.32 MM**

**GRADING RESULTS**

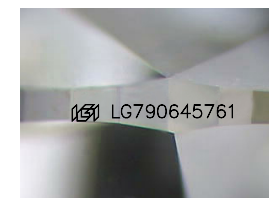
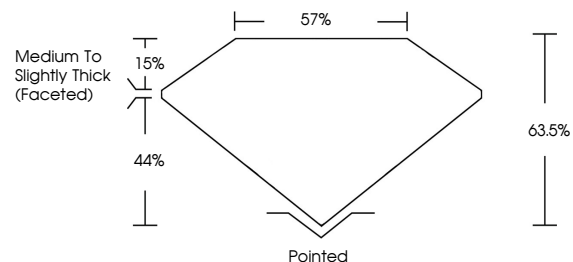
Carat Weight **1.05 CARAT**  
Color Grade **FANCY VIVID GREEN**  
Clarity Grade **VVS 2**

**ADDITIONAL GRADING INFORMATION**

Polish **EXCELLENT**  
Symmetry **EXCELLENT**  
Fluorescence **VERY SLIGHT**  
Inscription(s) **IGI LG790645761**

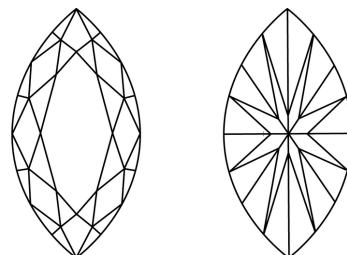
Comments: This Laboratory Grown Diamond was created by Chemical Vapor Deposition (CVD) growth process.  
Indications of post-growth treatment.

**PROPORTIONS**



Sample Image Used

**CLARITY CHARACTERISTICS**



**KEY TO SYMBOLS**

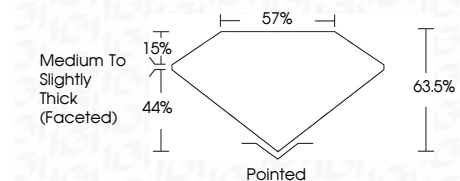
Red symbols indicate internal characteristics.  
Green symbols indicate external characteristics.

**COLOR**

D E F G H I J Faint Very Light Light

**CLARITY**

FL	IF	VVS <sup>1-2</sup>	VS <sup>1-2</sup>	SI <sup>1-2</sup>	I <sup>1-3</sup>
Flawless	Internally Flawless	Very Very Slightly Included	Very Slightly Included	Slightly Included	Included



**ADDITIONAL GRADING INFORMATION**

Polish **EXCELLENT**  
Symmetry **EXCELLENT**  
Fluorescence **VERY SLIGHT**  
Inscription(s) **IGI LG790645761**  
Comments: This Laboratory Grown Diamond was created by Chemical Vapor Deposition (CVD) growth process.  
Indications of post-growth treatment.



April 13, 2026  
IGI Report No LG790645761  
**MARQUISE BRILLIANT**  
1.05 CARAT  
FANCY VIVID GREEN  
VVS 2  
10.62 X 5.23 X 3.32 MM  
63.5%  
07%  
Medium to Slightly Thick (Faceted)  
Pointed  
EXCELLENT  
EXCELLENT  
VERY SLIGHT  
IGI LG790645761  
Comments: This Laboratory Grown Diamond was created by Chemical Vapor Deposition (CVD) growth process.  
Indications of post-growth treatment.