



**ELECTRONIC COPY**

LG790645636  
Report verification at igi.org



April 13, 2026

IGI Report Number **LG790645636**

Description **LABORATORY GROWN DIAMOND**

Shape and Cutting Style **OVAL MODIFIED BRILLIANT**

Measurements **10.74 X 7.68 X 4.71 MM**

**GRADING RESULTS**

Carat Weight **3.02 CARATS**

Color Grade **FANCY INTENSE YELLOW**

Clarity Grade **VS 2**

April 13, 2026  
IGI Report Number **LG790645636**  
Description **LABORATORY GROWN DIAMOND**  
Shape and Cutting Style **OVAL MODIFIED BRILLIANT**  
Measurements **10.74 X 7.68 X 4.71 MM**

**GRADING RESULTS**

Carat Weight **3.02 CARATS**

Color Grade **FANCY INTENSE YELLOW**

Clarity Grade **VS 2**

**ADDITIONAL GRADING INFORMATION**

Polish **EXCELLENT**

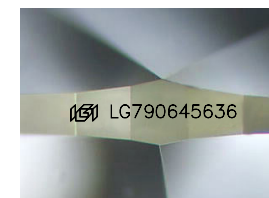
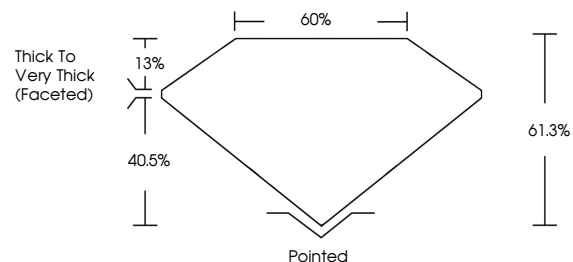
Symmetry **EXCELLENT**

Fluorescence **NONE**

Inscription(s) **LG790645636**

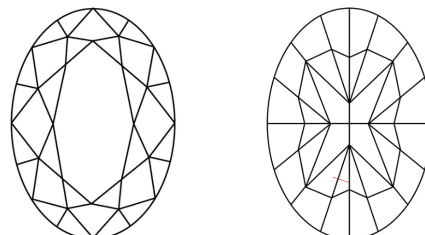
Comments: This Laboratory Grown Diamond was created by Chemical Vapor Deposition (CVD) growth process.

**PROPORTIONS**



Sample Image Used

**CLARITY CHARACTERISTICS**



**KEY TO SYMBOLS**

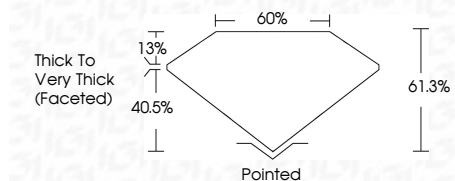
Red symbols indicate internal characteristics.  
Green symbols indicate external characteristics.

**COLOR**

D E F G H I J Faint Very Light Light

**CLARITY**

FL	IF	VS <sup>1-2</sup>	VS <sup>1-2</sup>	SI <sup>1-2</sup>	I <sup>1-3</sup>
Flawless	Internally Flawless	Very Very Slightly Included	Very Slightly Included	Slightly Included	Included



**ADDITIONAL GRADING INFORMATION**

Polish **EXCELLENT**

Symmetry **EXCELLENT**

Fluorescence **NONE**

Inscription(s) **LG790645636**

Comments: This Laboratory Grown Diamond was created by Chemical Vapor Deposition (CVD) growth process.



**IGI**



April 13, 2026  
IGI Report No **LG790645636**  
**OVAL MODIFIED BRILLIANT**  
3.02 CARATS  
Carat Weight **FANCY INTENSE YELLOW**  
Color Grade **VS 2**  
Depth **61.0%**  
Table **60%**  
Girdle **Thick to Very Thick (Faceted)**  
Culet **Pointed**  
Polish **EXCELLENT**  
Symmetry **EXCELLENT**  
Fluorescence **NONE**  
Inscription(s) **LG790645636**  
Comments: This Laboratory Grown Diamond was created by Chemical Vapor Deposition (CVD) growth process.