



**ELECTRONIC COPY**

LG790645202  
Report verification at igi.org



April 15, 2026

IGI Report Number **LG790645202**

Description **LABORATORY GROWN DIAMOND**

Shape and Cutting Style **ROUND BRILLIANT**

Measurements **10.30 - 10.35 X 6.11 MM**

**GRADING RESULTS**

Carat Weight **4.04 CARATS**

Color Grade **F**

Clarity Grade **VS 1**

Cut Grade **EXCELLENT**

April 15, 2026  
IGI Report Number **LG790645202**  
Description **LABORATORY GROWN DIAMOND**  
Shape and Cutting Style **ROUND BRILLIANT**  
Measurements **10.30 - 10.35 X 6.11 MM**

**GRADING RESULTS**

Carat Weight **4.04 CARATS**

Color Grade **F**

Clarity Grade **VS 1**

Cut Grade **EXCELLENT**

**ADDITIONAL GRADING INFORMATION**

Polish **EXCELLENT**

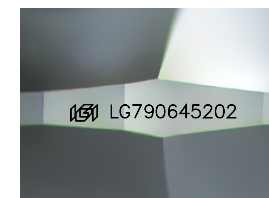
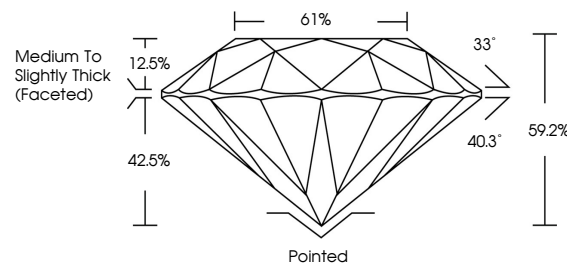
Symmetry **EXCELLENT**

Fluorescence **NONE**

Inscription(s) **IGI LG790645202**

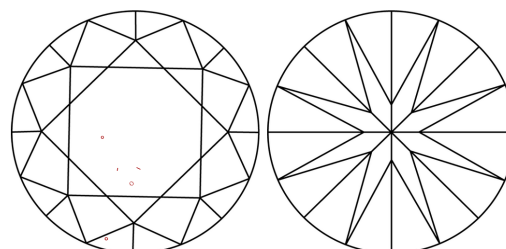
Comments: This Laboratory Grown Diamond was created by Chemical Vapor Deposition (CVD) growth process.  
Type IIa

**PROPORTIONS**



Sample Image Used

**CLARITY CHARACTERISTICS**



**KEY TO SYMBOLS**

Red symbols indicate internal characteristics.  
Green symbols indicate external characteristics.

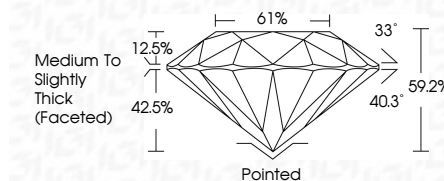
**COLOR**

D E F G H I J Faint Very Light Light

**CLARITY**

FL IF VS<sup>1-2</sup> VS<sup>1-2</sup> SI<sup>1-2</sup> I<sup>1-3</sup>

Flawless Internally Flawless Very Very Slightly Included Very Slightly Included Slightly Included Included



**ADDITIONAL GRADING INFORMATION**

Polish **EXCELLENT**

Symmetry **EXCELLENT**

Fluorescence **NONE**

Inscription(s) **IGI LG790645202**

Comments: This Laboratory Grown Diamond was created by Chemical Vapor Deposition (CVD) growth process.  
Type IIa



April 15, 2026	IGI Report No LG790645202	4.04 CARATS	F	VS 1	EXCELLENT	61%	33°	40.3°	59.2%	Pointed	EXCELLENT	EXCELLENT	NONE	IGI LG790645202
ROUND BRILLIANT	10.30 - 10.35 X 6.11 MM	Carat Weight	Color Grade	Clarity Grade	Cut Grade	Table	Crown Angle	Pavilion Angle	Total Depth	Shape and Cutting Style	Polish	Symmetry	Fluorescence	Inscription(s)
										Medium To Slightly Thick (Faceted)				

Comments: This Laboratory Grown Diamond was created by Chemical Vapor Deposition (CVD) growth process.  
Type IIa