



ELECTRONIC COPY

LG790644988
Report verification at igi.org



April 11, 2026

IGI Report Number **LG790644988**

Description **LABORATORY GROWN DIAMOND**

Shape and Cutting Style **CUT CORNERED
RECTANGULAR MODIFIED
BRILLIANT**

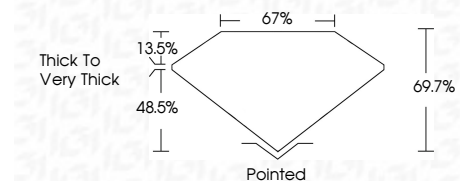
Measurements **7.52 X 5.19 X 3.62 MM**

GRADING RESULTS

Carat Weight **1.40 CARAT**

Color Grade **FANCY YELLOW**

Clarity Grade **VS 1**



ADDITIONAL GRADING INFORMATION

Polish **EXCELLENT**

Symmetry **EXCELLENT**

Fluorescence **NONE**

Inscription(s) **IGI LG790644988**

Comments: This Laboratory Grown Diamond was created by Chemical Vapor Deposition (CVD) growth process.



April 11, 2026
IGI Report No LG790644988
CUT CORNERED RECT. MODIFIED BRILLIANT
7.52 X 5.19 X 3.62 MM
1.40 CARAT
FANCY YELLOW
VS 1
69.7%
67%
Thick to Very Thick
Pointed
EXCELLENT
EXCELLENT
NONE
IGI LG790644988
Comments: This Laboratory Grown Diamond was created by Chemical Vapor Deposition (CVD) growth process.

LABORATORY GROWN DIAMOND REPORT

April 11, 2026

IGI Report Number **LG790644988**

Description **LABORATORY GROWN DIAMOND**

Shape and Cutting Style **CUT CORNERED RECTANGULAR
MODIFIED BRILLIANT**

Measurements **7.52 X 5.19 X 3.62 MM**

GRADING RESULTS

Carat Weight **1.40 CARAT**

Color Grade **FANCY YELLOW**

Clarity Grade **VS 1**

ADDITIONAL GRADING INFORMATION

Polish **EXCELLENT**

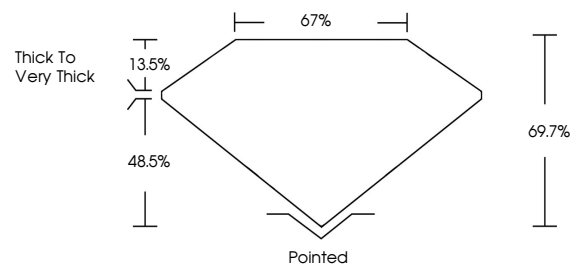
Symmetry **EXCELLENT**

Fluorescence **NONE**

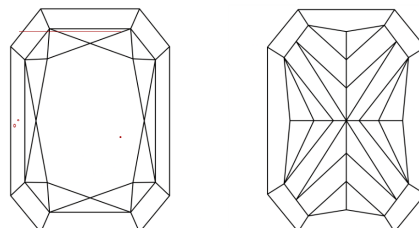
Inscription(s) **IGI LG790644988**

Comments: This Laboratory Grown Diamond was created by Chemical Vapor Deposition (CVD) growth process.

PROPORTIONS

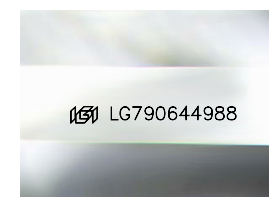


CLARITY CHARACTERISTICS



KEY TO SYMBOLS

Red symbols indicate internal characteristics.
Green symbols indicate external characteristics.



Sample Image Used

COLOR

D E F G H I J Faint Very Light Light

CLARITY

FL	IF	VS ¹⁻²	VS ¹⁻²	SI ¹⁻²	I ¹⁻³
Flawless	Internally Flawless	Very Very Slightly Included	Very Slightly Included	Slightly Included	Included

