



**ELECTRONIC COPY**

LG790644730  
Report verification at igi.org



April 13, 2026  
IGI Report Number **LG790644730**  
Description **LABORATORY GROWN DIAMOND**  
Shape and Cutting Style **CUSHION MODIFIED BRILLIANT**  
Measurements **10.66 X 7.50 X 5.11 MM**  
**GRADING RESULTS**  
Carat Weight **3.72 CARATS**  
Color Grade **FANCY VIVID YELLOW**  
Clarity Grade **VS 2**

April 13, 2026  
IGI Report Number **LG790644730**  
Description **LABORATORY GROWN DIAMOND**  
Shape and Cutting Style **CUSHION MODIFIED BRILLIANT**  
Measurements **10.66 X 7.50 X 5.11 MM**

**GRADING RESULTS**

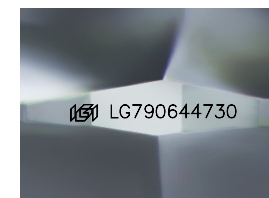
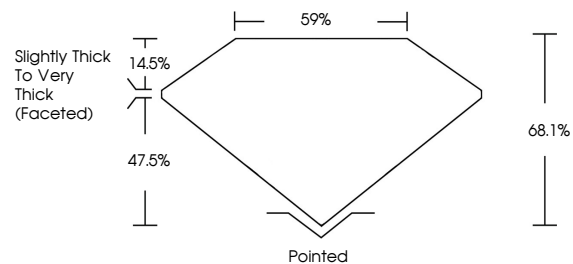
Carat Weight **3.72 CARATS**  
Color Grade **FANCY VIVID YELLOW**  
Clarity Grade **VS 2**

**ADDITIONAL GRADING INFORMATION**

Polish **EXCELLENT**  
Symmetry **EXCELLENT**  
Fluorescence **NONE**  
Inscription(s) **IGI LG790644730**

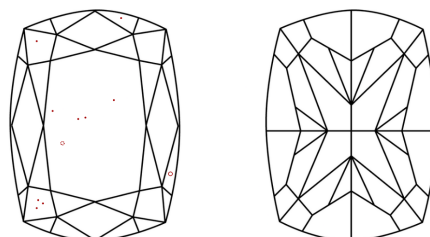
Comments: This Laboratory Grown Diamond was created by Chemical Vapor Deposition (CVD) growth process.

**PROPORTIONS**



Sample Image Used

**CLARITY CHARACTERISTICS**



**KEY TO SYMBOLS**

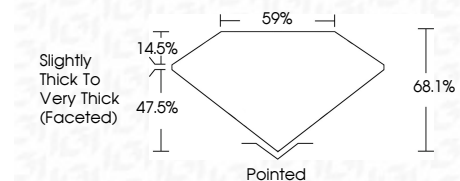
Red symbols indicate internal characteristics.  
Green symbols indicate external characteristics.

**COLOR**

D E F G H I J Faint Very Light Light

**CLARITY**

| FL       | IF                  | VS <sup>1-2</sup>           | VS <sup>1-2</sup>      | SI <sup>1-2</sup> | I <sup>1-3</sup> |
|----------|---------------------|-----------------------------|------------------------|-------------------|------------------|
| Flawless | Internally Flawless | Very Very Slightly Included | Very Slightly Included | Slightly Included | Included         |



**ADDITIONAL GRADING INFORMATION**

Polish **EXCELLENT**  
Symmetry **EXCELLENT**  
Fluorescence **NONE**  
Inscription(s) **IGI LG790644730**  
Comments: This Laboratory Grown Diamond was created by Chemical Vapor Deposition (CVD) growth process.



April 13, 2026  
IGI Report No **LG790644730**  
**CUSHION MODIFIED BRILLIANT**  
**3.72 CARATS**  
Carat Weight **FANCY VIVID YELLOW**  
Color Grade **VS 2**  
Depth **68.1%**  
Table **59%**  
Girdle **Slightly Thick To Very Thick (Faceted)**  
Culet **Pointed**  
Polish **EXCELLENT**  
Symmetry **EXCELLENT**  
Fluorescence **NONE**  
Inscription(s) **IGI LG790644730**  
Comments: This Laboratory Grown Diamond was created by Chemical Vapor Deposition (CVD) growth process.