



**ELECTRONIC COPY**

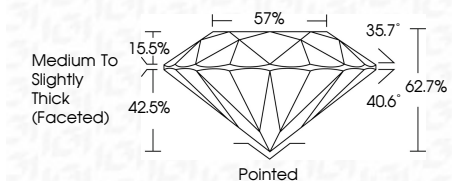
LG790644610  
Report verification at igi.org



April 15, 2026  
IGI Report Number **LG790644610**  
Description **LABORATORY GROWN DIAMOND**  
Shape and Cutting Style **ROUND BRILLIANT**  
Measurements **7.94 - 7.98 X 4.99 MM**

**GRADING RESULTS**

Carat Weight **2.00 CARATS**  
Color Grade **G**  
Clarity Grade **VS 1**  
Cut Grade **EXCELLENT**



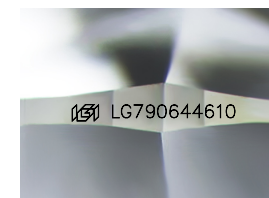
**ADDITIONAL GRADING INFORMATION**

Polish **EXCELLENT**  
Symmetry **EXCELLENT**  
Fluorescence **NONE**  
Inscription(s) **IGI LG790644610**  
Comments: As Grown - No indication of post-growth treatment.  
This Laboratory Grown Diamond was created by High Pressure High Temperature (HPHT) growth process.  
Type II  
Faint Blue



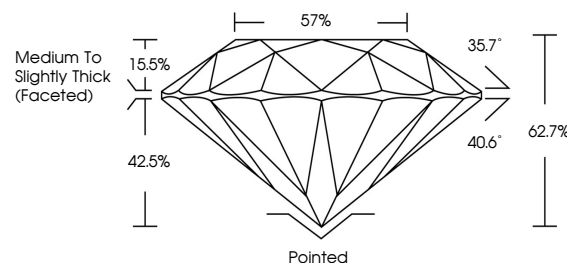
**IGI**

April 15, 2026  
IGI Report No LG790644610  
**ROUND BRILLIANT**  
2.00 CARATS  
Color Grade **G**  
Clarity Grade **VS 1**  
Cut Grade **EXCELLENT**  
Depth **62.7%**  
Table **57%**  
Girdle **Medium To Slightly Thick (Faceted)**  
Culet **Pointed**  
Polish **EXCELLENT**  
Symmetry **EXCELLENT**  
Fluorescence **NONE**  
Inscription(s) **IGI LG790644610**  
Comments: As Grown - No indication of post-growth treatment.  
This Laboratory Grown Diamond was created by High Pressure High Temperature (HPHT) growth process.  
Type II  
Faint Blue

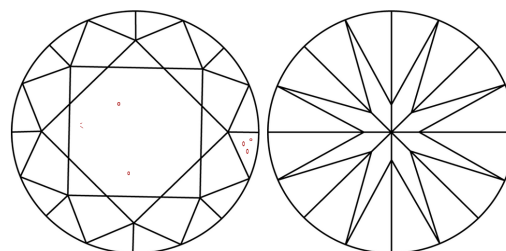


Sample Image Used

**PROPORTIONS**



**CLARITY CHARACTERISTICS**



**KEY TO SYMBOLS**

Red symbols indicate internal characteristics.  
Green symbols indicate external characteristics.

**COLOR**

D E F G H I J Faint Very Light Light

**CLARITY**

FL	IF	VS <sup>1-2</sup>	VS <sup>1-2</sup>	SI <sup>1-2</sup>	I <sup>1-3</sup>
Flawless	Internally Flawless	Very Very Slightly Included	Very Slightly Included	Slightly Included	Included

