



ELECTRONIC COPY

LG790643092
Report verification at igi.org



June 16, 2026
IGI Report Number LG790643092
Description LABORATORY GROWN DIAMOND
Shape and Cutting Style CUT CORNERED RECTANGULAR MODIFIED BRILLIANT
Measurements 15.24 X 10.55 X 7.22 MM
GRADING RESULTS
Carat Weight 10.01 CARATS
Color Grade F
Clarity Grade VVS 2

LABORATORY GROWN DIAMOND REPORT

June 16, 2026
IGI Report Number LG790643092
Description LABORATORY GROWN DIAMOND
Shape and Cutting Style CUT CORNERED RECTANGULAR MODIFIED BRILLIANT
Measurements 15.24 X 10.55 X 7.22 MM

GRADING RESULTS

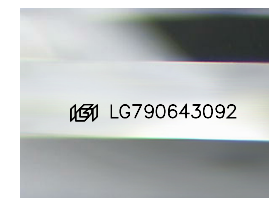
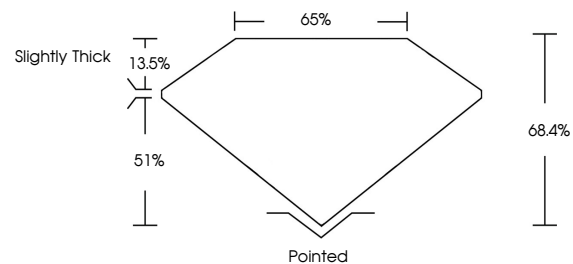
Carat Weight 10.01 CARATS
Color Grade F
Clarity Grade VVS 2

ADDITIONAL GRADING INFORMATION

Polish EXCELLENT
Symmetry EXCELLENT
Fluorescence NONE
Inscription(s) LG790643092

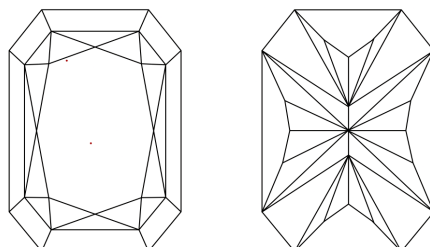
Comments: This Laboratory Grown Diamond was created by Chemical Vapor Deposition (CVD) growth process. Type IIa

PROPORTIONS



Sample Image Used

CLARITY CHARACTERISTICS



KEY TO SYMBOLS

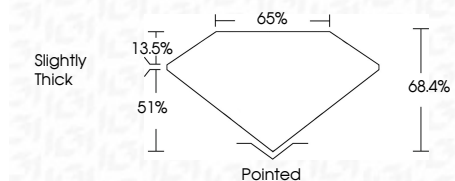
Red symbols indicate internal characteristics.
Green symbols indicate external characteristics.

COLOR

D E F G H I J Faint Very Light Light

CLARITY

FL IF VVS 1-2 VS 1-2 SI 1-2 I 1-3
Flawless Internally Flawless Very Very Slightly Included Very Slightly Included Slightly Included Included



ADDITIONAL GRADING INFORMATION

Polish EXCELLENT
Symmetry EXCELLENT
Fluorescence NONE
Inscription(s) LG790643092
Comments: This Laboratory Grown Diamond was created by Chemical Vapor Deposition (CVD) growth process. Type IIa



June 16, 2026
IGI Report No LG790643092
CUT CORNERED RECT. MODIFIED BRILLIANT
15.24 X 10.55 X 7.22 MM
10.01 CARATS
F
VVS 2
68.4%
65%
Slightly Thick
Pointed
EXCELLENT
EXCELLENT
NONE
LG790643092
Comments: This Laboratory Grown Diamond was created by Chemical Vapor Deposition (CVD) growth process. Type IIa