



**ELECTRONIC COPY**

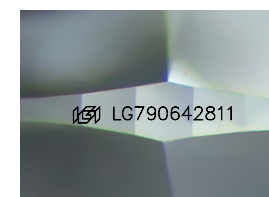
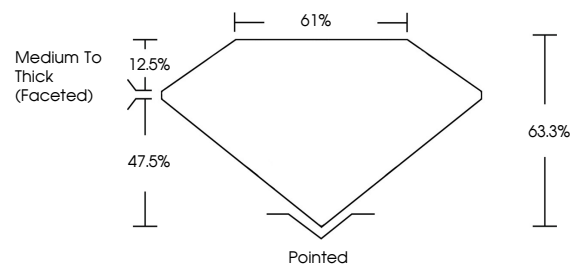
LG790642811  
Report verification at igi.org



June 10, 2026  
IGI Report Number **LG790642811**  
Description **LABORATORY GROWN DIAMOND**  
Shape and Cutting Style **CUSHION MODIFIED BRILLIANT**  
Measurements **12.17 X 9.09 X 5.75 MM**  
**GRADING RESULTS**  
Carat Weight **5.07 CARATS**  
Color Grade **E**  
Clarity Grade **VVS 1**

June 10, 2026  
IGI Report Number **LG790642811**  
Description **LABORATORY GROWN DIAMOND**  
Shape and Cutting Style **CUSHION MODIFIED BRILLIANT**  
Measurements **12.17 X 9.09 X 5.75 MM**

**PROPORTIONS**

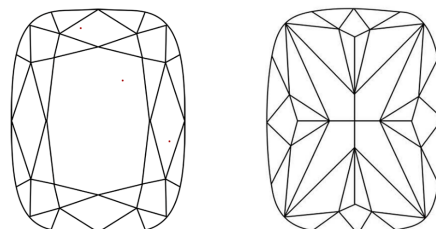


Sample Image Used

**GRADING RESULTS**

Carat Weight **5.07 CARATS**  
Color Grade **E**  
Clarity Grade **VVS 1**

**CLARITY CHARACTERISTICS**



**KEY TO SYMBOLS**

Red symbols indicate internal characteristics.  
Green symbols indicate external characteristics.

**ADDITIONAL GRADING INFORMATION**

Polish **EXCELLENT**  
Symmetry **EXCELLENT**  
Fluorescence **NONE**  
Inscription(s) **IGI LG790642811**

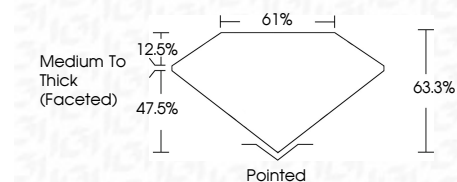
Comments: This Laboratory Grown Diamond was created by Chemical Vapor Deposition (CVD) growth process.  
Type IIa

**COLOR**

D E F G H I J Faint Very Light Light

**CLARITY**

FL	IF	VVS <sup>1-2</sup>	VS <sup>1-2</sup>	SI <sup>1-2</sup>	I <sup>1-3</sup>
Flawless	Internally Flawless	Very Very Slightly Included	Very Slightly Included	Slightly Included	Included



**ADDITIONAL GRADING INFORMATION**

Polish **EXCELLENT**  
Symmetry **EXCELLENT**  
Fluorescence **NONE**  
Inscription(s) **IGI LG790642811**  
Comments: This Laboratory Grown Diamond was created by Chemical Vapor Deposition (CVD) growth process.  
Type IIa



June 10, 2026  
IGI Report No LG790642811  
CUSHION MODIFIED BRILLIANT  
12.17 X 9.09 X 5.75 MM  
5.07 CARATS  
E  
VVS 1  
63.3%  
61%  
Medium To Thick (Faceted)  
Pointed  
EXCELLENT  
EXCELLENT  
NONE  
IGI LG790642811  
Comments: This Laboratory Grown Diamond was created by Chemical Vapor Deposition (CVD) growth process.  
Type IIa