



**ELECTRONIC COPY**

LG790642795  
Report verification at igi.org



June 4, 2026  
IGI Report Number **LG790642795**  
Description **LABORATORY GROWN DIAMOND**  
Shape and Cutting Style **PEAR BRILLIANT**  
Measurements **19.06 X 12.36 X 7.53 MM**  
**GRADING RESULTS**  
Carat Weight **10.27 CARATS**  
Color Grade **F**  
Clarity Grade **VVS 1**

June 4, 2026  
IGI Report Number **LG790642795**  
Description **LABORATORY GROWN DIAMOND**  
Shape and Cutting Style **PEAR BRILLIANT**  
Measurements **19.06 X 12.36 X 7.53 MM**

**GRADING RESULTS**

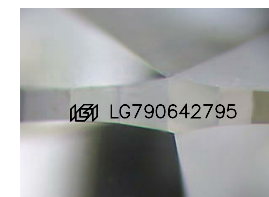
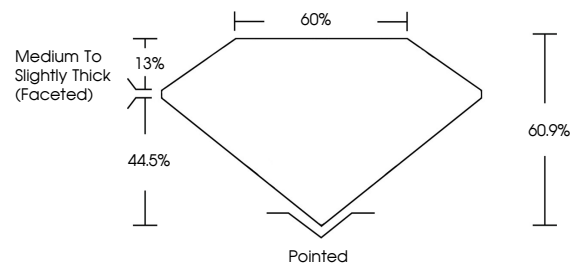
Carat Weight **10.27 CARATS**  
Color Grade **F**  
Clarity Grade **VVS 1**

**ADDITIONAL GRADING INFORMATION**

Polish **EXCELLENT**  
Symmetry **EXCELLENT**  
Fluorescence **NONE**  
Inscription(s) **IGI LG790642795**

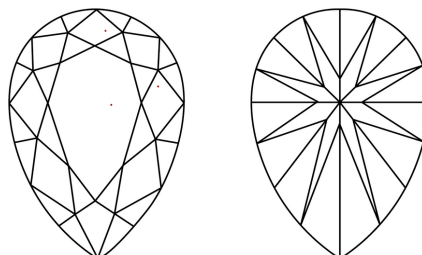
Comments: This Laboratory Grown Diamond was created by Chemical Vapor Deposition (CVD) growth process. Type IIa

**PROPORTIONS**



Sample Image Used

**CLARITY CHARACTERISTICS**



**KEY TO SYMBOLS**

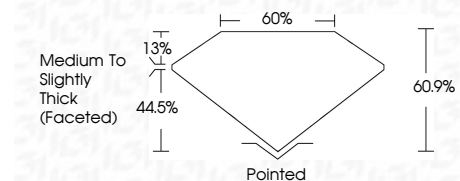
Red symbols indicate internal characteristics.  
Green symbols indicate external characteristics.

**COLOR**

D E F G H I J Faint Very Light Light

**CLARITY**

FL	IF	VS <sup>1-2</sup>	VS <sup>1-2</sup>	SI <sup>1-2</sup>	I <sup>1-3</sup>
Flawless	Internally Flawless	Very Very Slightly Included	Very Slightly Included	Slightly Included	Included



**ADDITIONAL GRADING INFORMATION**

Polish **EXCELLENT**  
Symmetry **EXCELLENT**  
Fluorescence **NONE**  
Inscription(s) **IGI LG790642795**  
Comments: This Laboratory Grown Diamond was created by Chemical Vapor Deposition (CVD) growth process. Type IIa



June 4, 2026  
IGI Report No **LG790642795**  
**PEAR BRILLIANT**  
19.06 X 12.36 X 7.53 MM  
10.27 CARATS  
Color Grade **F**  
Clarity Grade **VVS 1**  
Depth **60.9%**  
Table **60%**  
Girdle **Medium to Slightly Thick (Faceted)**  
Culet **Pointed**  
Polish **EXCELLENT**  
Symmetry **EXCELLENT**  
Fluorescence **NONE**  
Inscription(s) **IGI LG790642795**  
Comments: This Laboratory Grown Diamond was created by Chemical Vapor Deposition (CVD) growth process. Type IIa