



ELECTRONIC COPY

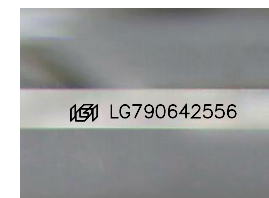
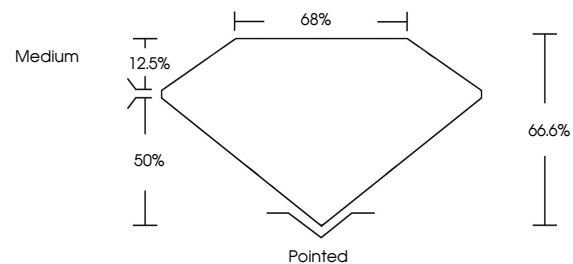
LG790642556
Report verification at igi.org



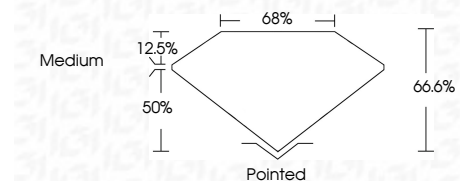
May 27, 2026
IGI Report Number LG790642556
Description LABORATORY GROWN DIAMOND
Shape and Cutting Style CUT CORNERED RECTANGULAR MODIFIED BRILLIANT
Measurements 12.09 X 8.58 X 5.71 MM
GRADING RESULTS
Carat Weight 5.01 CARATS
Color Grade F
Clarity Grade VVS 2

May 27, 2026
IGI Report Number LG790642556
Description LABORATORY GROWN DIAMOND
Shape and Cutting Style CUT CORNERED RECTANGULAR MODIFIED BRILLIANT
Measurements 12.09 X 8.58 X 5.71 MM

PROPORTIONS



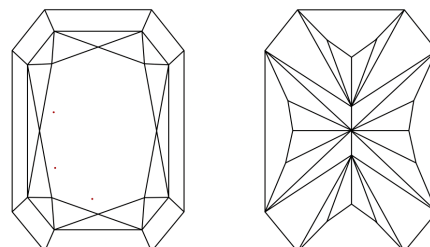
Sample Image Used



GRADING RESULTS

Carat Weight 5.01 CARATS
Color Grade F
Clarity Grade VVS 2

CLARITY CHARACTERISTICS



KEY TO SYMBOLS

Red symbols indicate internal characteristics.
Green symbols indicate external characteristics.

COLOR

D E F G H I J Faint Very Light Light

CLARITY

FL IF VVS 1-2 VS 1-2 SI 1-2 I 1-3
Flawless Internally Flawless Very Very Slightly Included Very Slightly Included Slightly Included Included

ADDITIONAL GRADING INFORMATION

Polish EXCELLENT
Symmetry EXCELLENT
Fluorescence NONE
Inscription(s) LG790642556
Comments: This Laboratory Grown Diamond was created by Chemical Vapor Deposition (CVD) growth process. Type IIa

ADDITIONAL GRADING INFORMATION

Polish EXCELLENT
Symmetry EXCELLENT
Fluorescence NONE
Inscription(s) LG790642556

Comments: This Laboratory Grown Diamond was created by Chemical Vapor Deposition (CVD) growth process. Type IIa



May 27, 2026
IGI Report No LG790642556
CUT CORNERED RECT. MODIFIED BRILLIANT
5.01 CARATS F
12.09 X 8.58 X 5.71 MM
Carat Weight 5.01 CARATS
Color Grade F
Clarity Grade VVS 2
Depth 66.6%
Table 68%
Girdle Medium
Culet Pointed
Polish EXCELLENT
Symmetry EXCELLENT
Fluorescence NONE
Inscription(s) LG790642556
Comments: This Laboratory Grown Diamond was created by Chemical Vapor Deposition (CVD) growth process. Type IIa